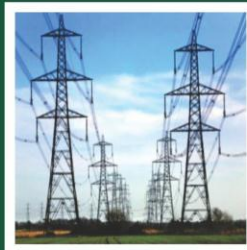




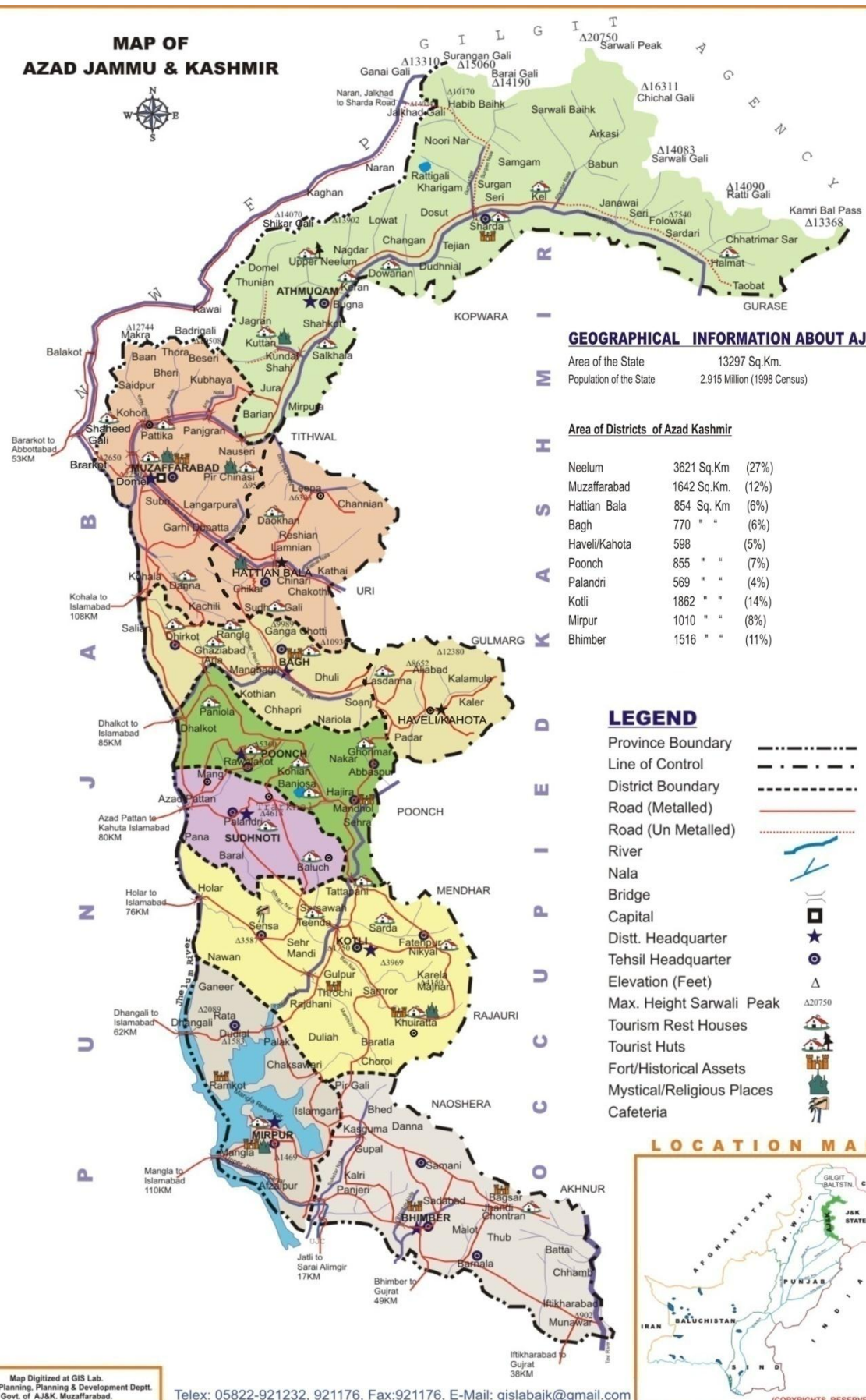
**Azad Government of the State of
Jammu & Kashmir**

**AZAD JAMMU & KASHMIR
AT A GLANCE
2012**



Planning & Development Department

MAP OF AZAD JAMMU & KASHMIR



GEOGRAPHICAL INFORMATION ABOUT AJK

Area of the State 13297 Sq.Km.
 Population of the State 2.915 Million (1998 Census)

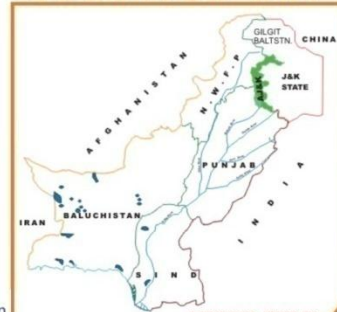
Area of Districts of Azad Kashmir

Neelum	3621 Sq.Km	(27%)
Muzaffarabad	1642 Sq.Km.	(12%)
Hattian Bala	854 Sq. Km	(6%)
Bagh	770 " "	(6%)
Haveli/Kahota	598 " "	(5%)
Poonch	855 " "	(7%)
Palandri	569 " "	(4%)
Kotli	1862 " "	(14%)
Mirpur	1010 " "	(8%)
Bhimber	1516 " "	(11%)

LEGEND

- Province Boundary
- Line of Control
- District Boundary
- Road (Metalled)
- Road (Un Metalled)
- River
- Nala
- Bridge
- Capital
- Distt. Headquarter
- Tehsil Headquarter
- Elevation (Feet)
- Max. Height Sarwali Peak
- Tourism Rest Houses
- Tourist Huts
- Fort/Historical Assets
- Mystical/Religious Places
- Cafeteria

LOCATION MAP



Map Digitized at GIS Lab.
 Land Use Planning, Planning & Development Dept.
 Govt. of A.J.K. Muzaffarabad.

Telex: 05822-921232, 921176, Fax:921176, E-Mail: gislabajk@gmail.com

(COPYRIGHTS RESERVED)

Introduction

Azad Jammu and Kashmir lies between longitude 73⁰ - 75⁰ and latitude of 33⁰ - 36⁰ and comprises of an area of 5134 Square Miles (13297 Square Kilometers).

The topography of the area is mainly hilly and mountainous with valleys and stretches of plains. Azad Kashmir is bestowed with natural beauty having thick forests, fast flowing rivers and winding streams, main rivers are Jehlum, Neelum and Poonch. The climate is sub-tropical to temperate highland type with an average yearly rainfall of 1300 mm. The elevation from sea level ranges from 360 meters in the South to 6325 meters in the North. The snow line in winter is around 1200 meters above sea level while in summer, it rises to 3300 meters.

Population:-

According to the 1998 population census the state of Azad Jammu & Kashmir had a population of 2.973 million, which is estimated to have grown to 4.153 million in 2012. The population comprises of 50.34% male and 49.66% females i.e, 101 males per 100 females. Almost 100% population comprises of Muslims. The Rural: Urban population ratio is 88:12. The population density is 312 persons per Sq. Km. Average family size is estimated at 6.7 members.

Literacy rate which was 55% in 1998 census has now risen to 65%.

1. **Approximately the infant mortality rate is 62 per 1000 live births.**
2. **The immunization rate for the children under 5 years of age is more than 95%.**

Per Capita Income and Employment:-

The majority of the rural population depends on forestry, livestock, agriculture and non-formal employment to eke out its subsistence. National average per capita income has been estimated to be 1368 US\$*. Unemployment ranges from 9.0 to 13%. In line with the National trends, indicators of social sector particularly health and population have not shown much proficiency. Efforts have been made during the recent past to make up this deficiency so that the fruits of development can be brought to the door steps of common men.

*Economic survey of Pakistan 2012-13

Agriculture:-

Area under cultivation is around 194193 hectares, which is almost 13% of the total Geographical area out of which 92% of the cultivable area is rain-fed. About 87% households have very small land holdings between one to two acres. Major crops are Maize, Wheat & Rice whereas minor crops are Grams, Pulses (red kidney beans), Vegetables and Oil-seeds. Major fruits produced in AJK are Apple, Pears, Apricot and Walnuts. Agriculture and livestock income ranges between 30-40% of household earnings.

The remaining share comes from other sources including employment, businesses and remittances received by the families of Kashmiries living abroad. Reduced agriculture productivity has adversely affected the traditional lifestyle and per capita income of the rural households.

Forestry:-

About 42.6% of the total Geographical area (0.567 million hectares), is controlled by the Forests Department. The per capita standing volume is 299.5 Cft and per capita forest area is 0.35 Acre. Annual wood demand is 1.65 million cubic meters and sustainable production is 1.94 million cubic meters. The local communities have traditional rights in terms of use of the forests and on an average three trees are burnt by one household every year for the fuel-wood requirements in the absence of alternate sources. Similarly, about 5 trees on average are required to construct a house for which the wood roofs have to be replaced after every 8-10 years.

Livestock:-

On an average in AJK, livestock consists of 3 heads and 2 head per household for small ruminants and cattle/buffalo respectively. Overall gross annual income from livestock is Rs. 1,600.00 per household and contribution of milk is about 68%.

Presidents of Azad Jammu & Kashmir

Name	From	To
o Sardar Muhammad Ibrahim Khan	24 October, 1947	29 May 1950
o Captain (R) Syed Ali Ahmed Shah	30 May, 1950	3 Dec, 1951
o Mir Waiz Molana Muhammad Yousaf Shah	4 December, 1951	19 June, 1952
o Colonal (R) Sher Ahmed Khan	20 June, 1952	30 May, 1956
o Mir Waiz Molana Muhammad Yousaf Shah	31 May, 1956	7 Sep, 1956
o Sardar Muhammad Abdul-Qayyum Khan	8 Sep, 1956	13 April, 1957
o Sardar Muhammad Ibrahim Khan	14 April ,1957	14 May, 1959
o Mr. K.H. Khursheed	15 May, 1959	15 Aug, 1964
o Khan Abdul Hameed Khan	16 August, 1964	17 Oct, 1968
o Brigadier (R) Abdur-Rahman	18 Oct, 1968	10 Nov, 1970
o Sardar Muhammad Abdul-Qayyum Khan	11 Nov, 1970	16 Apr, 1975
o Sheikh Manzar Masaud	17 April, 1975	4 June, 1975
o Sardar Muhammad Ibrahim Khan	5 June, 1975	31 Oct, 1978
o Brigadier Mohammad Hayat Khan	1 Nov, 1978	31 Jan, 1983
o Major General (R) Abdur-Rahman	1 Feb, 1983	30 Sep, 1985
o Sardar Muhammad Abdul-Qayyum Khan	1 Oct, 1985	12 Aug, 1991
o Sardar Sikandar Hayat Khan	12 August, 1991	12 May, 1996
o Abdul Rasheed Abbasi	12 May, 1996	26 Aug, 1996
o Sardar Ibrahim Khan	26 August, 1996	31 July, 2001
o Sardar Muhammad Anwar Khan	1 August, 2001	26 July, 2006
o Raja Zulqurnain Khan	25 August, 2006	24- Aug- 011
o Sardar Muhammad Yaqoob Khan	26- Aug- 2011	To be Continued

Prime Ministers of Azad Jammu & Kashmir

Name	From	To
o Khan Abdul Hameed Khan	5 June 1975	11 Aug, 1977
o Sardar Sikandar Hayat Khan	June, 1985	29 June 1990
o Mumtaz Hussain Rathore	29 June 1990	29 July 1991
o Sardar Muhammad Abdul-Qayyum Khan	29 July 1991	30 July 1996
o Barrister Sultan Mehmood Choudhery	30 July , 1996	24 July 2001
o Sardar Sikandar Hayat Khan	24 July 2001	23 July 2006
o Sardar Attique Ahmed Khan	24 July 2006	06 Jan 2009
o Sardar Muhammad Yaqoob Khan	06 Jan 2009	21 Oct 2009
o Raja Farooq Haider Khan	22 Oct 2009	28-July-2010
o Sardar Attique Ahmed Khan	29 July 2010	25-July-2011
o Chaudry Abdul Majid	26 July 2011	To be Continued

Chief Executives of the Azad Jammu & Kashmir

Name	From	To
o Major General (R) Abdul Rahman	12 August 1977	31 Oct,1977
o Brigadier (R) Mohammad Hayat Khan	1 Nov, 1977	31 Jan, 1983
o Major General (R) Abdul Rahman	1 Feb, 1983	3 Sep, 1985

Government

Azad Kashmir has a parliamentary form of Government. The President of Azad Jammu and Kashmir is the Constitutional Head of the State, while the Prime Minister, supported by a council of Ministers, is the Chief Executive. Azad Kashmir has its own legislative assembly comprising 41 direct and 8 indirect elected members, a member each from Technocrats, Mashaikhs, Overseas Kashmiris and 5 female members. The AJ&K has its institutions of Supreme Court and High Court.

Administrative Set-up.

Azad Kashmir is divided into three divisions (Muzaffarabad, Poonch & Mirpur) and ten administrative districts with Muzaffarabad as the capital of the State. The Muzaffarabad Division comprises of Muzaffarabad, Hattian and Neelum, Poonch Division comprises of Bagh, Haveli, Poonch & Sudhnoti districts whereas Mirpur Division consists of Mirpur, Kotli & Bhimber Districts. These ten districts are further divided into 31 subdivisions, 189 Union Councils and 1771 Revenue Villages. There are 2 Municipal Corporations, 11 Municipal Committees, and 31 Markaz Councils, which are administrated by the LG&RD Department.

Economic Development

In 1947, at the time of partition, the economy in Azad Jammu and Kashmir was on subsistence level but the determination to develop the area was there. It was in early 60's when economic development of the area started in earnest. Despite financial constraints, successive governments made good efforts in laying down a proper path for the development of the area.

Physical Infrastructure

Roads:

Roads and air transport are the only mode of transportation in Azad Jammu and Kashmir. The present road length and its comparison with the position in 1947 are given below: -

Road Length (Kms)

	1947	2012
Metalled	100	7269
Fair-weather	165	6470
Total	265	13739
Road Density (Km Per Sq.Km)	0.008	0.55

Airports

The Government of Azad Jammu and Kashmir in collaboration with the Civil Aviation Authority of Pakistan has constructed two small airports in Muzaffarabad and Rawalakot cities in order to provide easy and fast mode of travel (Flights presently suspended). Moreover, Mirpur airport will be constructed in collaboration with Civil Aviation Authority GoP. About 1.5 million People belonging to AJ&K are living abroad, hence; there is dire need for construction of international airports in AJ&K.

Power

At present, the installed Grid capacity is 647.30 MVA. About 25721 km transmission lines have been extended to 1670 villages out of a total of 1771 villages and about 3.616 million population have been provided with electricity supply. The per capita electricity consumption is 347 KWH and within next two years 100% population of AJK is planned to be provided with power connections. The Government lays great emphasis on generating electricity in order to meet the growing domestic as well as industrial requirements. It has been planned to launch a comprehensive programme for construction of Hydro power stations to exploit this vast potential.

Piped Water Supply

At the time of independence, availability of piped water supply was non-existent but significant progress has now been made in this regard. Presently 62% of the urban population and 48.7 % of rural population has been provided with a piped water supply through house connections and public stand posts. Out of 1771 villages, 1032 have been provided with water supply facility.

Special Communications Organization (SCO)

SCO raised since 1976, is providing state-of-the-art, modern IT and Telecom facilities in the most difficult region of Azad Jammu & Kashmir, current services include landline Telephone (PSTN), Mobile (GSM), Wireless Local Loop (WLL), Internet Broadband (DSL) and Digital Cross Connect (DXX). Despite competitive market, de-regulated telecomm environment and presence of all cellular giants in the area, SCO has been declared Significant Market Player (SMP) by the PTA during current year.

Vision of the SCO is stipulation of reliable, effective, innovative and up-to-date voice and data communication services to the people living in the most rugged / arduous terrain.

Social Infrastructure

Health Facilities

Health coverage in Azad Jammu & Kashmir is still inadequate. There are approximately 3129 hospital beds available in the area averaging one bed per 1327 people. The total number of Doctors, including Administrative Doctors, Health Managers & Dentists is 864 out of which there are 502 Medical Officers, 68 Dental Surgeons, 232 Specialists and 62 Health Managers giving an average of 0.208 per 1000 population in respect of Doctors, 0.120 Per 1000 Population in respect of Medical Officers, 0.015 per 1000 Population in respect of Dentists, 0.056 per 1000 Pop., in respect of Specialists and 0.015 per 1000 pop., in respect of Health Managers, whereas only 30 hospital beds & 11 dispensaries were available in the area at the time of independence.

Education

Education has been a priority of the Govt. of Azad Jammu & Kashmir as about 30% of its total recurring budget, besides, 7% of the total development budget is allocated to this sector. As a result of this substantial investment, AJ&K's literacy rate is 65% which is significantly higher than the national average of Pakistan. At present the gross Enrollment rate* at primary level is 98% for boys and 89% for girls (between the age of 5-9). District wise literacy rate is given below.

Source:- *National Educational Censuses 2005(Includes the Enrollment in Private Schools).

S.#	Name of District	Literacy Rate %
	AJK	65
1.	Muzaffarabad/Hattian	62
2.	Neelum	47
3.	Poonch	70
4.	Bagh/Haveli	64
5.	Sudhnoti	69
6.	Mirpur	68
7.	Kotli	63
8.	Bhimber	69

Investment Opportunities in Azad Kashmir

The State of Azad Jammu & Kashmir by virtue of its topography, meteorology, hydrology & administrative setup provides huge opportunities of investment in various sectors. Keeping in view the investment potential in AJK the Government is encouraging investment in the following sectors:-

Industrial Investment

The Government has adopted the Industrial policy of Federal Govt. according to which all types of industries are allowed to be established in the territory of AJK except Arms & Ammunition, Security printing, Explosive material and Radioactive material.

In order to accelerate the pace of development, the department of Industries has established 6 Industrial Estates in various districts of Azad Kashmir with basic infrastructure like roads, water supply, and sewerage system and telephone & electricity facilities. The number of medium & large scale Industries which have already been established in different districts of Azad Kashmir is 1743.

In view of the localized requirement of AJK, there is huge potential for Industries like Food, Hydro power generation, Ready made garments, furniture and plastic products in the area.

In order to boost the Industrial Production in AJK, the Govt. is providing incentives to the industrialists including concession in different taxes and providing energy on cheaper rates for first five years to run the Industries. It will be advisable that detailed feasibility of industrial products must be carried out for making final decisions of investment.

Development of Cottage Industry and Kashmiri Handicrafts.

There are many investment opportunities in traditional handicrafts of Kashmir. Azad Kashmir Small Industries Corporation (AKSIC) established in 1992, is an official body committed to promote the development of handicrafts and in turn the economic betterment of the working handicraftsmen. AKSIC objective is to educate and assist the working craftsmen to set up and run their business properly. Equipped with God gifted resources and manned with requisite expertise, the AKSIC is committed to honor the buyers, demands, preferences and requirements.

Mineral Resources

The Geological environment of AJK comprises generally 3 types of rocks i.e. Sedimentary, Igneous and Metamorphic. The Industrial minerals and base metals are found in all of 3 rocks spreading all over the AJK territory. In AJK mineral exploration activities started in 1973 by AKMIDC, a state owned corporation and emphasis was laid on assessment of potential economic deposits and an analysis of value of the different minerals discovered in the area so far amount to 137.915 million tons.

Hydro Power Generation

Up to 1973-74, electricity facility was available to few villages of District Muzaffarabad & Mirpur. In 1973-74, a phased program was planned to provide electricity to urban & rural population, which is being continued. Under this program, several schemes have been implemented through which electricity distribution network has been expanded up to 98% population of rural areas of AJ&K. Approximately 517770 service connections have been provided under this program.

AJ&K has a potential of generation of 8682 MW of electricity using its natural resources.

Vital Statistics of AJK and Pakistan (2012).

Description	AJK	Pakistan
Area (Sq.km)	13,297	796,096
Cultivated land (%)	13	22.10
Area under productive forest (%)	11.6	4.6
Villages	1771	48344
Population (projected in million)	4.153	178.910
Population Growth Rate (%)	2.41	1.8+
Unemployment Rate per Annum (%)	13	5.7
Literacy (%)	65	58
Enrollment rate Primary Boys (%)	98	60
Enrollment rate Primary Girls (%)	89	54
Road density (km/sq. km)	0.55	0.33
Infant mortality (per 1000)	56	82
Population per hospital bed	1327	1665
Population per doctor	4807	1206
MMR	201	267
Immunization Coverage (%)	94	53
Per capita power availability (KWH)	284.5	247
Rural/Urban ratio	88:12	67:33
Pop. Density per sq. Km.	312	166
Per capita income (per annum) US\$	1368	1368

- Source:-
- i. Federal Bureau of Statistics, Islamabad.
 - ii. Depts. of Health , Education & Public Works-Muzaffarabad.
 - iii. Economic Survey of Pakistan 2012-13.

Geographical Feature

Area	5134 Sq. Miles 13297 Sq Km. 1.330 Million Hectors 3.286 million Acres
Longitude Latitude	73° — 75° 33°— 36°
Topography	Mainly hilly and Mountainous with terraces Valleys and Plains at some places.
Climate Temperature	Sub-tropical highland type Maximum 45.2 °C Minimum -2.6 °C
Rainfall	1300 mm on the average
Elevation from sea • Range from South • Range from North	360 meters 6325 meters
Snow Line • In Winter around • In Summer around	1200 meters 3300 meters
Main Rivers	Jhelum , Neelum & Poonch

Area & Population-2012

Total area of Azad Jammu & Kashmir **13297 sq. Kms**
(5134 sq. Miles)

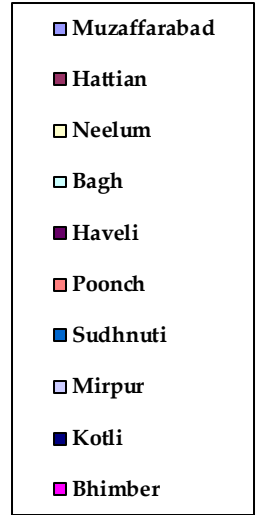
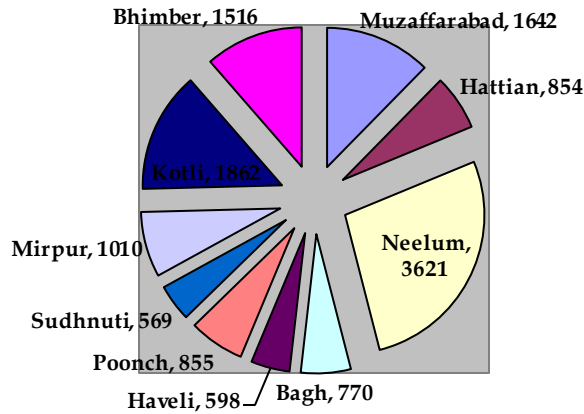
Total Population of Azad Jammu & Kashmir **41, 53,000**
(4.153 Million)

District-Wise Area, Population, Density, Growth Rate & Household-Size in Azad Kashmir						
Districts	Area (Sq.Kms)	Population Census 1998 (Million)		MICS 2007-08	Projected Population 2012(million)	Density in 2012 (Persons/ Sq.Km)
		Population	Growth rate	House-hold* Size		
Muzaffarabad	1642	0.454	2.80%	5.8	0.668	407
Hattian	854	0.166	2.80%	5.8	0.244	286
Neelum	3621	0.126	2.80%	7.6	0.185	51
Mirpur	1010	0.333	2.09%	6.7	0.445	441
Bhimber	1516	0.302	2.60%	6.7	0.432	285
Kotli	1862	0.563	2.59%	7.3	0.805	432
Poonch	855	0.411	2.24%	6.8	0.560	655
Bagh	770	0.282	2.00%	6.8	0.372	483
Haveli	598	0.112	2.00%	6.8	0.147	246
Sudhnoti	569	0.224	1.99%	6.6	0.295	518
TOTAL	13297	2.973	2.41%	6.7	4.153	312

Projected on the basis of 1998 census.

Sources:-Population Census Organization Islamabad.

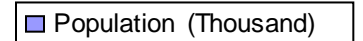
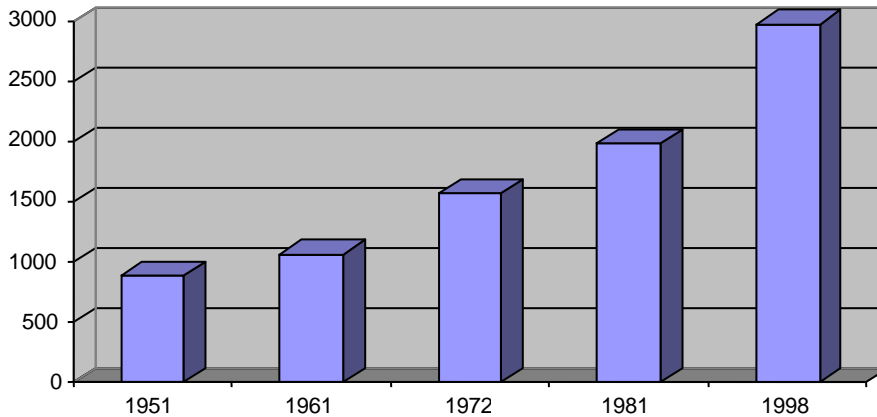
District wise Area of AJ&K (Sq. Kms)



Source: 1998 Census

Population and Intercensal increase since 1951

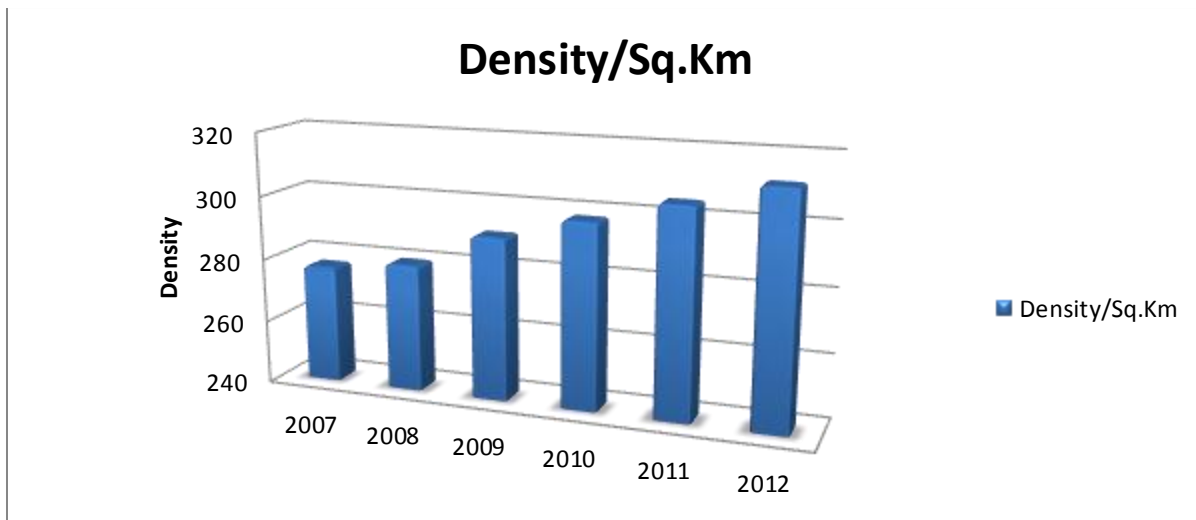
Description	1951	1961	1972	1981	1998
Population (Thousand)	886	1065	1573	1983.47	2972.50
Inter censal increase (Percent)	-	20.16	47.71	26.11	49.86
Commutative increase (Percent)	-	20.16	77.54	123.87	235.50
Average annual Growth rate (Percent)	-	1.87	3.43	2.74	2.41



Source: 1998 Census

Density per Square Kilometer in AJ&K

Years	2008	2009	2010	2011	2012
Density /Sq. Km	280	291	298	305	312



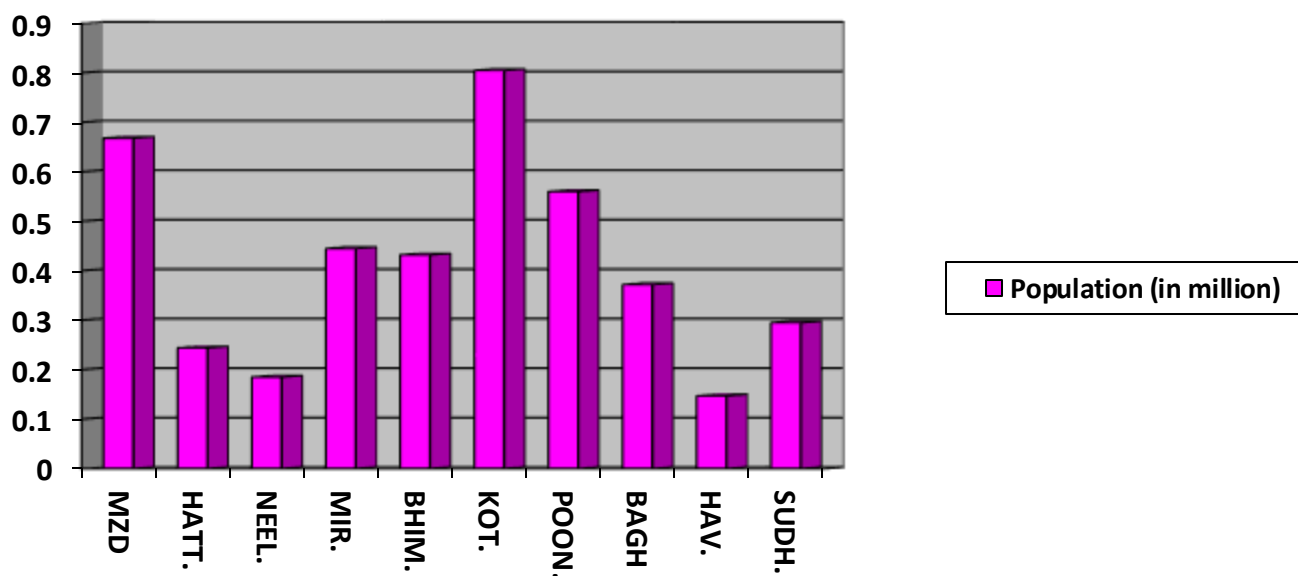
Source: 1998 Census

Districts wise Area and Population of AJ&K 2012

Districts		Area		Population	
		Sq. Kms	%	Projected population 2012	%
1.	Muzaffarabad	1642	12.4	0.668	16.08
2.	Hattian	854	6.4	0.244	5.88
3.	Neelum	3621	27.2	0.185	4.45
4.	Mirpur	1010	7.6	0.445	10.72
5.	Bhimber	1516	11.4	0.432	10.40
6.	Kotli	1862	14.0	0.805	19.38
7.	Poonch	855	6.4	0.560	13.48
8.	Bagh	770	5.8	0.372	8.96
9.	Haveli	598	4.5	0.147	3.54
10.	Sudhnoti	569	4.3	0.295	7.10
Total AJ&K		13297	100	4.153	100.00

Projected on the basis of 1998 census.

Sources:-Population Census Organization Islamabad.



District Wise AJ&K Population

District /Sex wise Urban Rural Population 1998 Census

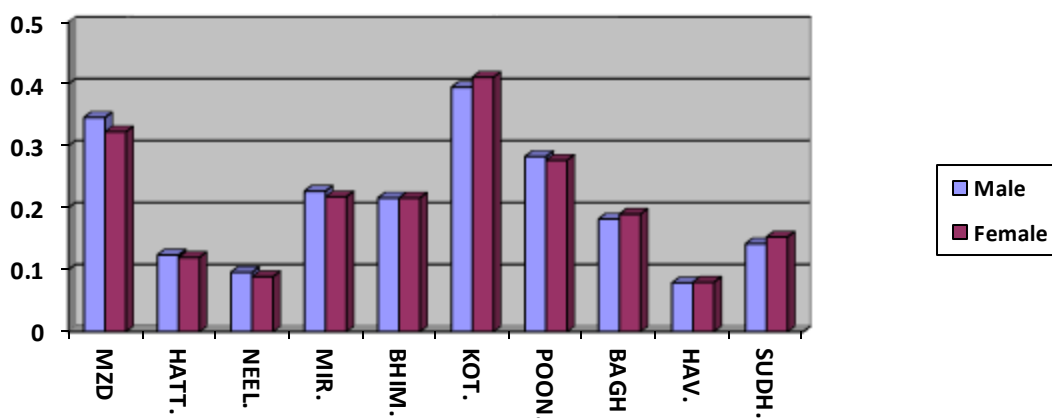
(In million)

District	Urban			Rural			G. Total		
	Male	Female	Total	Male	Female	Total	Male	Female	Total
M.abad	0.047	0.038	0.085	0.188	0.181	0.369	0.235	0.219	0.454
Hattian	0.005	0.005	0.011	0.079	0.076	0.155	0.084	0.082	0.166
Neelum	0.003	0.002	0.006	0.062	0.058	0.120	0.065	0.060	0.126
Mirpur	0.061	0.055	0.116	0.110	0.108	0.218	0.170	0.163	0.333
Bhimber	0.008	0.008	0.016	0.143	0.143	0.285	0.151	0.151	0.302
Kotli	0.024	0.022	0.046	0.251	0.266	0.517	0.276	0.287	0.563
Poonch	0.028	0.026	0.054	0.180	0.177	0.357	0.208	0.203	0.411
Bagh	0.010	0.009	0.019	0.128	0.134	0.263	0.138	0.144	0.282
Haveli	0.002	0.001	0.003	0.058	0.050	0.109	0.060	0.052	0.112
Sudhnoti	0.008	0.008	0.016	0.100	0.108	0.208	0.108	0.116	0.224
G. Total	0.196	0.176	0.372	1.299	1.302	2.600	1.495	1.477	2.972

Source: 1998 Census.

District /Sex Wise Urban Rural Projected Population 2012

District	Urban			Rural			G.Total		
	Male	Female	Total	Male	Female	Total	Male	Female	Total
M.abad	0.069	0.056	0.126	0.276	0.266	0.542	0.346	0.323	0.668
Hattian	0.008	0.008	0.016	0.116	0.113	0.229	0.124	0.120	0.244
Neelum	0.005	0.004	0.008	0.091	0.085	0.177	0.096	0.089	0.185
Mirpur	0.081	0.074	0.154	0.147	0.144	0.291	0.227	0.218	0.445
Bhimber	0.012	0.011	0.023	0.204	0.205	0.409	0.216	0.216	0.432
Kotli	0.035	0.031	0.066	0.360	0.380	0.740	0.395	0.411	0.805
Poonch	0.038	0.036	0.074	0.246	0.241	0.487	0.283	0.277	0.560
Bagh	0.013	0.012	0.025	0.169	0.177	0.347	0.182	0.190	0.372
Haveli	0.002	0.002	0.004	0.077	0.067	0.143	0.079	0.068	0.147
Sudhnoti	0.011	0.011	0.022	0.131	0.142	0.274	0.142	0.153	0.295
G.total	0.274	0.244	0.518	1.817	1.821	3.638	2.091	2.065	4.155



District/Sex Wise Urban Rural Projected Population

Source: 1998 Census

Population Features 2012

Projected population of AJK. (2012)	4.153
Male population. (2012)	2.091 Million
Female population. (2012)	2.065Million
Sex Ratio (Number of males per 100 females)	101
Average Family Size.	6.7 Members. (MICS 2007-08)
Urban-Rural Ratio	12 : 88 “
Growth Rate	2.41 % “
Population Density 1998 Census.	258 Persons/Sq. Km.
“ “ 2012 projected	312 Persons/Sq.Km. “
Literacy Rate	
▪ Above 10 year (MICS 2007-08)	64 %
▪ Above 15 year (MICS 2007-08)	60 %
Religion	Almost 100% Muslims

*Projected on the basis of 1998 census

Source: Population Census Organization – Islamabad.

Administrative Set Up 2012

Divisions	03
Districts	10
Sub Divisions	31
Thana / Police Stations	43
Development Authority	05
Markaz Council	31
Dehs Village	1771
Municipal Committees	11
Municipal Corporation	02
Union Councils	189

Sources:-Board of Revenue, Muzaffarabad.

Divisions, Districts & Sub Divisions of AJ&K 2012		
Division	District	Subdivision
Muzaffarabad	Muzaffarabad	<ul style="list-style-type: none"> • Muzaffarabad • Pattika(Naseerabad)
	Neelum	<ul style="list-style-type: none"> • Athmaqam • Sharda
	Hattian	<ul style="list-style-type: none"> • Hattian Bala • Leepa • Chikar
Poonch	Bagh	<ul style="list-style-type: none"> • Bagh • Dhirkot • Harigahal
	Haveli	<ul style="list-style-type: none"> • Haveli • Khurshidabad • Mumtazabad
	Poonch/Rwalakot	<ul style="list-style-type: none"> • Rawalakot • Hajira • Thorar • Abbaspur
	Sudhnoti	<ul style="list-style-type: none"> • Pallandri • Tararkhal • Mang • Baloch
Mirpur	Mirpur	<ul style="list-style-type: none"> • Mirpur • Dadyal
	Kotli	<ul style="list-style-type: none"> • Kotli • Khuiratta • Fatehpur • Sehnsa • Charhoi
	Bhimber	<ul style="list-style-type: none"> • Bhimber • Samahni • Barnala

Sources:-Board of Revenue, Muzaffarabad.

AJK District, Subdivision, Union Councils & Villages 2012

District	Subdivisions	Union Councils	Villages
Muzaffarabad	2	25	415
Hattian	3	13	167
Neelum	2	09	88
Bagh	3	19	140
Haveli	3	08	91
Poonch	4	25	122
Sudhnoti	4	12	61
Kotli	5	38	234
Mirpur	2	22	246
Bhimber	3	18	207
AJK	31	189	1771

Sources:-Board of Revenue, Muzaffarabad.

Agriculture in AJ&K 2012

Land Holdings Area in Hectares & Acres		
	Hectares	Acres
1. Total Farm Area	638455	1577622
Farm Area per Family	1.93	4.77
Farm Area Per Capita	0.24	0.58
2. Area Under Cultivation	194193	479852
Cultivated Area Per Family	0.64	1.59
Cultivated Area Per Capita	0.08	0.20
3. Annual Cropped Area	240471	594205
Non-irrigated Area	182091	449946
Irrigated Area	12102	29905
Area Under Maize Cultivation	102822	254073
Area Under wheat “	75183	185777
Area Under Rice “	3364	8312
Area Under Jawar “	147	364
Area Under Vegetables “	3072	7590
Area Under Fruits “	13072	32300

Sources: - Agriculture Department, Muzaffarabad.

Agriculture Land Holdings District Wise 2012

District	Unit	Total Farm Area	Farm Area per Family	Farm Area per Capita
Muzaffarabad	Hectares	84843	2.36	0.28
	Acres	209648	5.82	0.68
Hattian	Hectares	31189	0.13	0.16
	Acres	84521	0.33	0.4
Neelum	Hectares	22219	1.78	0.21
	Acres	54903	4.41	0.53
Mirpur	Hectares	85267	4.53	0.59
	Acres	210695	11.20	1.45
Bhimber	Hectares	129021	4.18	0.49
	Acres	318811	10.32	1.22
Kotli	Hectares	97200	1.68	0.19
	Acres	240182	4.14	0.48
Poonch	Hectares	58084	1.48	0.18
	Acres	143525	3.66	0.45
Bagh	Hectares	49654	1.82	0.21
	Acres	122695	4.50	0.52
Haveli	Hectares	36052	2.00	0.23
	Acres	89084	4.95	0.58
Sudhnoti	Hectares	41910	2.05	0.26
	Acres	103559	5.06	0.65
TOTAL	Hectares	635439	1.93	0.23
	Acres	1577623	4.76	0.58

Sources: - Agriculture Department, Muzaffarabad.

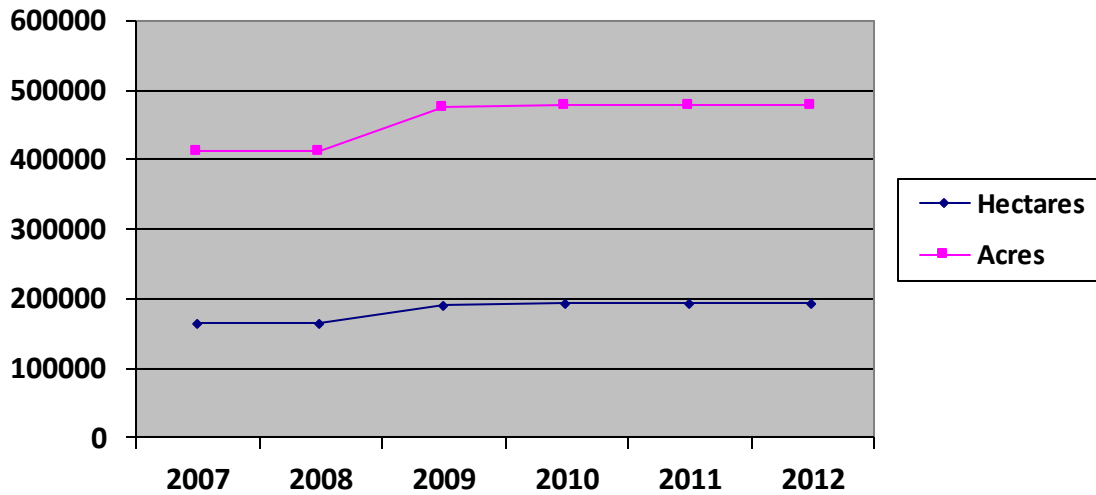
Area under Cultivation 2012

District	Unit	Area under Cultivation	Cultivated Area per Family	Cultivated Area per Capita
Muzaffarabad	Hectares	28077	0.78	0.09
	Acres	69378	1.92	0.23
Hattian	Hectares	11597	0.46	0.05
	Acres	28657	1.14	0.13
Neelum	Hectares	7682	0.36	0.04
	Acres	18982	0.89	0.11
Mirpur	Hectares	22008	0.93	0.12
	Acres	54382	2.31	0.30
Bhimber	Hectares	36668	1.13	0.13
	Acres	90607	2.78	0.33
Kotli	Hectares	33798	0.57	0.06
	Acres	83515	1.41	0.16
Poonch	Hectares	20738	0.52	0.06
	Acres	51244	1.29	0.15
Bagh	Hectares	14838	0.54	0.06
	Acres	36665	1.34	0.16
Haveli	Hectares	5455	0.30	0.03
	Acres	13479	0.75	0.08
Sudhnoti	Hectares	13332	0.66	0.08
	Acres	32943	1.62	0.21
Total	Hectares	194193	0.64	0.08
	Acres	479852	1.58	0.20

Sources: - Agriculture Department, Muzaffarabad.

Area under Cultivation

Years		2007	2008	2009	2010	2011	2012
Area Under Cultivation	Hectares	166433	166433	192041	193456	193984	194193
	Acres	411256	411256	474535	478031	479354	479852



Source:- Agriculture Department Muzaffarabad.

Annual Cropped Area Azad Jammu & Kashmir 2012

District	Unit	ANNUAL CROPPED AREA	Non-irrigated Area	Irrigated Area	Area Under Maize Cultivation	Area Under wheat	Area Under Rice	Area Under Jawar	Area Under Millet (BAJRA)	Area Under Gram	Area Under Vegetables
Muzaffarabad	Hectares	30757	25486	2591	24135	5169	594	0	0	0	731
	Acres	76002	62976	6402	59637	12773	1468	0	0	0	1807
Hattian	Hectares	12505	10618	979	10023	1741	249	0	0	0	392
	Acres	30901	26237	2420	24768	4301	615	0	0	0	969
Neelum	Hectares	7741	3115	4567	5148	218	41	0	0	0	621
	Acres	19127	7698	11284	12720	540	100	0	0	0	1534
Bagh	Hectares	18875	14667	171	9081	4331	51	0	0	0	265
	Acres	46639	36242	423	22438	10702	126	0	0	0	656
Haveli	Hectares	6221	5452	3	4519	230	6	0	0	0	213
	Acres	15371	13472	7	11166	569	16	0	0	0	527
Poonch	Hectares	21174	19892	846	10988	4894	91	0	0	0	340
	Acres	52320	49153	2091	27152	12094	226	0	0	0	841
Sudhnoti	Hectares	17103	13182	150	7469	5271	0	0	0	0	54
	Acres	42261	32573	370	18457	13025	0	0	0	0	135
Kotli	Hectares	50027	32981	817	23088	21530	262	5	190	0	264
	Acres	123616	81496	2019	57051	53201	647	11	470	0	653
Mirpur	Hectares	28499	21076	932	3042	11225	869	138	7966	0	99
	Acres	70421	52079	2303	7516	27738	2148	341	19683	0	245
Bhimber	Hectares	47571	35621	1047	5329	20572	1201	5	17174	0	91
	Acres	117548	88021	2587	13169	50834	2967	12	42436	0	226
Total	Hectares	240473	182090	12103	102822	75181	3364	148	25330	0	3070
	Acres	594205	449946	29905	254073	185777	8312	364	62591	0	7590

Source: Agriculture Department Muzaffarabad.

Agriculture Statistics 2012

Estimated % of Household with Farm	87%
Average Farm size (Total Farm Area/No. of Farms)	5.56
Total Farm Families	297120
Total Farm Population	2502103
Plant Protection Coverage	1022 (hec)

Major Crops & Fruits 2012

Major	Maize, Wheat, Rice
Minor	Jawar, Millet
Vegetable	Tomato, Beans, Spinach, Turnip, Karam, Potato
Fruit	Apple, Walnut, Apricot, Plump, Cherry

Farm Machinery in Usage (Public Sector)

Major Items	Government	Private	Total
Tractor	32	-	32
Bulldozers	7	-	7
Threshers	10	-	10
Maize Sheller	Nil	-	Nil
Tube wells /Lift Pumps	Nil	-	Nil

Major Crops Production for 2011-12

(Metric Tons)

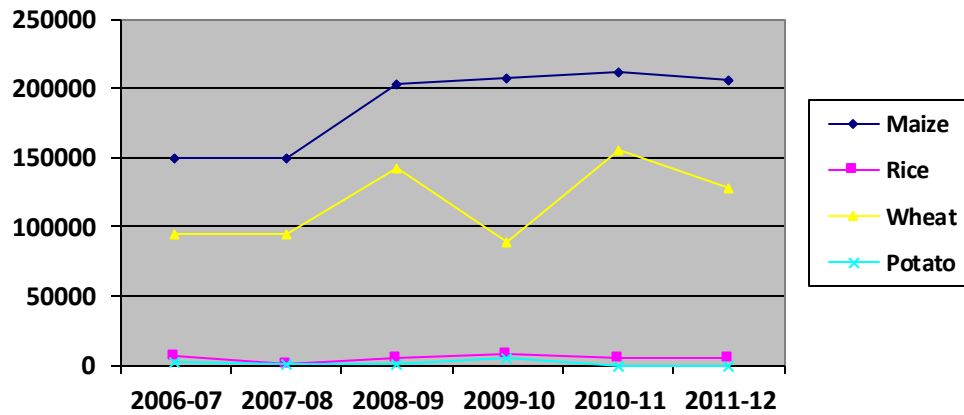
S.#	Name	Quantity
1	Maize	206311
2	Wheat	128486
3	Rice	5459
4	Millet	35290

Source: Agriculture Department Muzaffarabad.

Major Crops Production

(In. Metric ton)

Major Crops Production	2006-07	2007-08	2008-09	2009-10	2010-11	2011-12
Maize	149161	149161	203878	207341	211552	206311
Rice	6501	1189	5177	8522	5113	5459
Wheat	95000	94853	142400	89611	156225	128486
Potato	2435	1140	1120	5113	0	0



Source: Agriculture Department Muzaffarabad.

Livestock Population and Domestic Poultry Birds by Administrative Units 2012

Administration Unit	Number of Animals/Poultry Birds								
	Cattle	Buffaloes	Sheep	Goats	Camels	Horses	Mules	Asses	Poultry
State									
Overall	555754	642332	233851	1560138	604	11066	6253	58178	4213062
Districts wise									
Muzaffarabad	131832	72438	45374	210978	-	3614	2201	8749	687026
Hattian	59228	32544	20385	94787	-	1625	989	2931	308664
Neelum	47090	1258	49325	64896	-	3452	1796	1052	158285
Mirpur	32907	60423	5903	137303	128	911	125	10495	258957
Bhimber	68976	86906	5544	237612	218	330	33	10130	373820
Kotli	84578	175342	34770	418298	258	379	100	20271	808900
Bagh	41324	53947	18900	81779	-	261	373	461	337577
Haveli	16879	22035	7720	33403	-	107	152	189	137883
Poonch	32177	84727	31392	144035	-	192	322	1356	662960
Sudhnoti	40763	52712	14538	137047	-	195	162	1544	478990

Livestock Poultry Production for 2012

S #	Name	Quantity
1	Milk (Million Litre/day)	2.666
2	Meat (Metric tons)	12184
3	Eggs (Million)	270.852

Source:-Livestock Department, Muzaffarabad

VETERINARY FACILITIES 2012

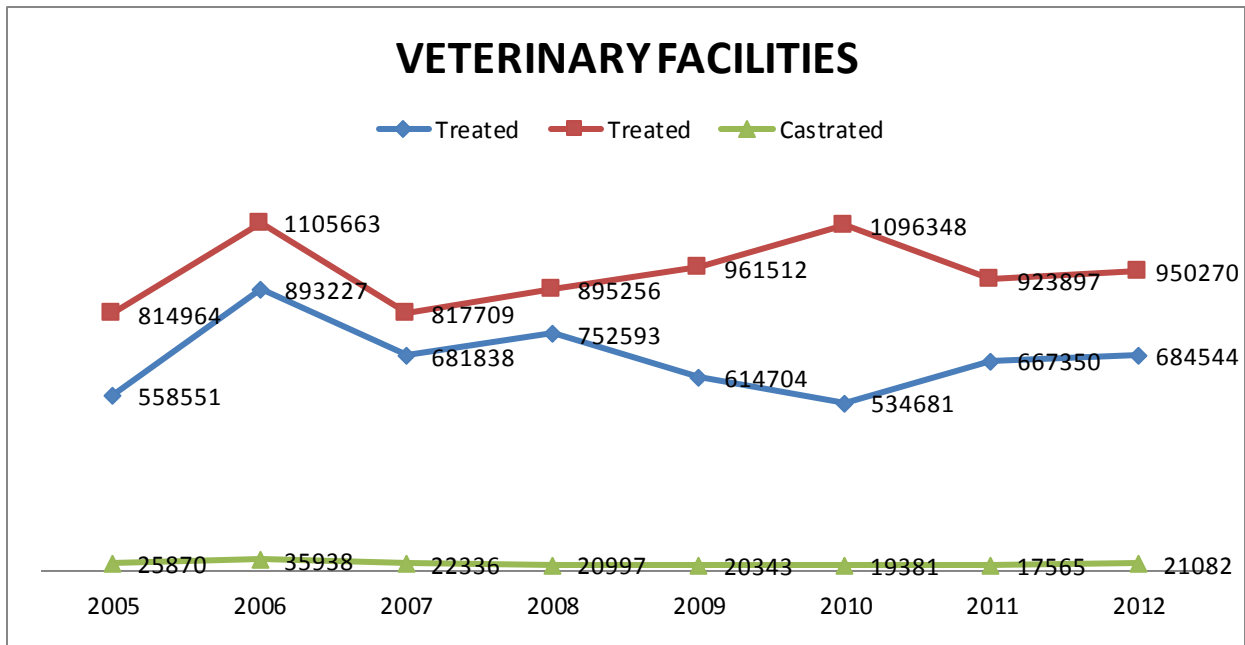
Districts	Civil Veterinary Hospitals	Veterinary Dispensaries	First Aid Centres	Tehsil Level Extension office	Extension Centres	A-I Centres	Labs	Livestock Dev. Res. Centre	Poultry Multiplication Centres
Neelum	5	3	5	-	-	4	-	-	-
Hattian	3	5	4	1	12	4	-	-	-
Muzaffarabad	8	10	12	2	25	10	2	1	1
Bagh	7	5	11	2	17	10	1	-	1
Haveli	1	3	7	1	7	2	-	-	-
Poonch	5	5	19	2	21	10	1	-	1
Sudhnoti	4	4	8	1	10	5	-	-	-
Kotli	11	15	26	4	32	14	1	-	1
Mirpur	7	9	14	2	25	11	1	-	1
Bhimber	8	7	13	2	18	13	-	-	-
Total	59	66	119	17	167	83	6	1	5

Source:-Livestock Department, Muzaffarabad

Animals Vaccinated, Treated and Castrated in AJK 2012

Year	Vaccinated	Treated	Castrated
2005	55851	814964	25870
2006	893227	1105663	35938
2007	681838	817709	22336
2008	752593	895256	20979
2009	614704	961512	20343
2010	534681	1096348	19338
2011	667350	923897	17565
2012	684544	950270	21082

Source:-Livestock Department, Muzaffarabad



Source:-Livestock Department, Muzaffarabad

AJK Medical College Muzaffarabad

Enrollment (Medical Students)

AJ&K Medical College Muzaffarabad

S.NO.	1 st year		2 nd year		3 rd Year		4 th Year		Total		G.Total
	Male	Female	Male	Female	Male	Female	Male	Female	Male	Female	
1	28	74	31	67	Nil	Nil	Nil	Nil	59	141	200

a) Faculty of AJ&K Medical College Muzaffarabad

Name of Faculties/Dep.	Staff Position										Total
	Professor		Associate Professor		Asstt. Professor		Dmo/Lecturers/Reg.		Non Teaching Staff		
	M	F	M	F	M	F	M	F	M	F	
Anatomy	1	-	-	-	3	-	4	10	8	1	27
Community med.	-	-	-	-	3	1	-	2	-	-	6
Surgery	1	-	-	-	4	-	4	-	-	-	9
Biochemistry	1	-	1	-	1	-	3	3	5	-	14
Forensic Med.	-	-	1	-	1	-	4	-	3	-	9
Pharmacology	1	-	-	-	1	-	1	5	2	-	10
Pathaology	2	-	1	-	2	1	2	2	8	1	19
Gynae/Obs	-	-	-	-	-	2	-	-	-	-	2
Medicine	1	-	-	-	4	-	1	2	1	-	9
Eye	1	-	-	-	-	-	-	-	-	-	1
ENT	1	-	-	-	1	-	-	-	-	-	2
Peads	-	-	-	-	2	-	1	2	-	-	5
Deramatology	-	-	1	-	-	-	-	1	-	-	2
Behavioural Sci.	-	-	-	-	1	-	-	1	-	-	2
Radiology	-	-	-	-	3	2	1	1	-	-	7
Physiology	-	-	1	-	3	-	4	4	3	-	15
Oncology	-	-	-	-	1	-	-	-	-	-	1
Nauru Surgery	-	-	-	-	1	-	-	-	-	-	1
Urology	-	-	-	-	3	-	-	-	-	-	3
Cardiology	-	-	-	-	1	-	-	-	-	-	1
Nephrology	-	-	-	-	1	-	-	-	-	-	1
Human Resource	-	-	-	-	-	-	-	-	2	1	3
Library	-	-	-	-	-	-	-	-	4	1	5
Student Branch	-	-	-	-	-	-	-	-	2	2	4
Store	-	-	5	-	-	-	-	-	6	-	6
Admin	-	-	-	-	-	-	-	-	32	1	33
Hostel Affairs	-	-	-	-	-	-	-	-	17	3	20
Total	9	-	5	-	36	6	25	33	93	10	217

Source:-AJK Medical College, Muzaffarabad.

Poonch Medical College Rawalakot
Enrollment (Medical Students)

S.NO.	1 st year		2 nd year		3 rd Year		4 th Year		Total		G.Total
	Male	Female	Male	Female	Male	Female	Male	Female	Male	Female	
1	16	46	Nil	Nil	Nil	Nil	Nil	Nil	16	46	62

a) Faculty of Poonch Medical College Rawalakot.

Name of Faculties/Dep.	Staff Position										Total
	Professor		Associate Professor		Asstt. Professor		Dmo/Lecturers/ Reg.		Non Teaching Staff		
	M	F	M	F	M	F	M	F	M	F	
Anatomy	2				1		5	2			10
Community med.	1						5	1			7
Surgery	1				1		1				3
Biochemistry	1							1			2
Forensic Med.		1					2				3
Pharmacology					1			1			2
Pathaology	2				2		6	1			11
Gynae/Obs						1		7			8
Medicine	1				1	1	2	2			7
ENT					1		1				2
Deramatology							1				1
Radiology	1				3						4
Physiology	1						8	1			10
Urology					1						1
Ophthalmology					2		2				4
Pediatrics					1		1				2
Orthopedics					1						1
Anesthesia					1						1
Psychiatry							1				1
Admin/Support Staff									61	3	64
Total	10	01			16	02	35	16	61	03	144

Source:-Poonch Medical College, Rawalakot.

MBBS Medical College Mirpur
Enrollment (Medical Students)

S.NO.	1 st year		2 nd year		3 rd Year		4 th Year		Total		G.Total
	Male	Female	Male	Female	Male	Female	Male	Female	Male	Female	
1	34	66	38	60	Nil	Nil	Nil	Nil	72	126	198

a) Faculty of MBBS Medical College Mirpur

Name of Faculties/Dep.	Staff Position										Total
	Professor		Associate Professor		Asstt. Professor		Dmo/Lecturers/Reg.		Non Teaching Staff		
	M	F	M	F	M	F	M	F	M	F	
Anatomy	1	-	1	-	-	-	2	6	7	-	17
Community med.	2	-	1	-	2	-	3	-	2	-	10
Surgery	2	-	1	-	4	-	3	-	-	-	10
Biochemistry	1	-	1	-	1	-	1	3	5	-	12
Forensic Med.	1	-	1	-	-	1	1	1	3	-	8
Pharmacology	1	-	-	-	1	-	1	-	3	-	6
Pathology	-	1	1	-	1	-	1	2	6	-	12
Gynae/Obs	-	-	-	-	-	4	-	-	-	-	4
Medicine	1	-	-	-	2	-	-	-	-	-	3
Eye	-	-	1	-	-	-	-	-	-	-	1
ENT	-	-	1	-	-	-	-	-	-	-	1
Peads	-	-	-	-	1	-	-	-	-	-	1
Dermatology	-	-	-	-	-	1	-	-	-	-	1
Behavioral Sci.	-	-	-	-	-	-	-	-	-	-	0
Radiology	-	-	-	-	1	1	-	-	-	-	2
Physiology	1	-	-	-	2	-	4	4	5	-	16
Oncology	-	-	-	-	-	-	-	-	-	-	0
Nauru Surgery	-	-	-	-	1	-	-	-	-	-	1
Urology	-	-	-	-	-	-	-	-	-	-	0
Cardiology	-	-	-	-	1	-	-	-	-	-	1
Nephrology	-	-	-	-	-	-	-	-	-	-	0
Human Resource	-	-	-	-	-	-	-	-	2	1	3
Library	-	-	-	-	-	-	-	-	3	1	4
Student Branch	-	-	-	-	-	-	-	-	2	-	2
Store	-	-	-	-	-	-	-	-	8	-	8
Admin	-	-	-	-	-	-	-	-	32	1	33
Hostel Affairs	-	-	-	-	-	-	-	-	11	10	21
Total	10	1	8	-	17	7	16	16	89	13	177

Source:-MBBS Medical College, Mirpur.

Education 2012

AJK University Enrollment (Muzaffarabad Campus)

Department	Ph.D		M.Phil/M.S/ LLM		M.Sc/M.A/ M.B.A		B.Sc(Hon.) /BCS/SE		Total		G.Total
	Male	Female	Male	Female	Male	Female	Male	Female	Male	Female	
A. Students strength Faculty of Sciences											
Statistics	0	0	0	0	21	59	0	0	21	59	80
Mathematics	3	1	13	12	82	90	0	0	98	103	201
Botany	11	5	9	14	12	121	0	0	32	140	172
Chemistry	11	6	8	19	61	145	0	0	80	170	250
Physics	7	0	18	11	112	69	0	0	137	80	217
Zoology	4	4	7	15	26	157	0	0	37	176	213
CS&IT	4	0	19	11	45	37	194	129	262	177	439
Geology	1	0	70	4	0	0	822	13	893	17	910
Total	41	16	144	86	359	678	1016	142	1560	922	2482
B. Students strength Faculty of Arts											
Art & Design	0	0	0	0	0	0	30	39	30	39	69
Education	0	0	0	0	0	0	20	43	20	43	63
Law	0	0	10	0	0	0	138	30	148	30	178
Economics	0	2	19	20	28	79	0	0	47	101	148
English	14	6	11	22	44	76	0	0	69	104	173
Sociology	0	0	0	0	44	69	0	0	44	69	113
Kashmir Studies	0	0	0	0	38	22	0	0	38	22	60
Business Administration	0	0	0	0	52	22	30	19	82	41	123
Total	14	8	40	42	206	268	218	131	478	449	927

AJK University Enrollment (Kotli Campus)

Department	B.A/B.Sc		M.Sc/M.B.A		M.Phil		Ph.D		Total		G.Total
	Male	Female	Male	Female	Male	Female	Male	Female	Male	Female	
C. Students strength Faculty of Administrative Sciences											
Business Administration	173	62	95	22	33	18	2	4	303	106	409
Commerce	36	21	117	21	0	0	0	0	153	42	195
Public Administration	0	0	69	10	0	0	0	0	69	10	79
HRM	0	0	47	16	0	0	0	0	47	16	63
CS&IT	257	95	0	0	0	0	0	0	257	95	352
Total	466	178	328	69	33	18	2	4	829	269	1098

Source:-AJK University, Muzaffarabad

Staff Position

a) Faculty of Science, Muzaffarabad.

Departments	Staff Positions										G. Total
	Ph.D		MS/M.Phil/ M.Sc (Hons.)		M.Sc/M.A M.F.A/ M.B.A		B.A/B.Sc/ B.Sc(Hons.)		Total		
	M	F	M	F	M	F	M	F	M	F	
Chemistry	6	1	4	3	0	0	0	0	10	4	14
Geology	5	0	3	1	8	2	0	0	16	3	19
Botany	3	3	2	1	0	0	0	0	5	4	9
Computer Science & IT	3	1	4	2	4	3	0	1	11	7	18
Mathematics	3	0	4	0	0	2	0	0	7	2	9
Zoology	3	0	3	3	0	0	0	0	6	3	9
Statistics	0	0	2	0	0	1	0	0	2	1	3
Physics	4	0	2	1	2	2	0	0	8	3	11
Total (A)	27	5	24	11	14	10	0	1	65	27	92
B. Faculty of Arts.											
Kashmir Studies	0	0	0	2	0	0	0	0	0	2	2
Economics	3	0	0	2	3	2	0	0	6	4	10
Business Administration	0	0	0	0	2	2	0	0	2	2	4
Sociology	0	0	0	0	0	0	0	0	0	0	0
Law	0	0	1	0	1	0	0	0	2	0	2
English	2	1	3	3	1	1	0	0	6	5	11
Art & Design	0	0	0	0	0	4	0	0	0	4	4
Education	0	0	0	0	0	0	0	0	0	0	0
Total (B)	5	1	4	7	7	9	0	0	16	17	33
C. Faculty of Admin. Sciences											
Business Administration	3	1	5	1	3	1	0	0	11	3	14
Computer Sciences	1	0	3	1	5	1	0	1	9	3	12
Commerce	0	0	1	0	3	0	0	0	4	0	4
Public Administration	0	0	2	0	2	4	0	0	4	4	8
HRM	0	0	0	0	0	0	0	0	0	0	0
Banking and Finance	0	0	0	0	0	0	0	0	0	0	0
Entrepreneurship	0	0	0	0	0	0	0	0	0	0	0
Allied Subjects	0	0	2	2	1	1	0	0	3	3	6
Total: (C)	4	1	13	4	14	7	0	1	31	13	44
G. Total; (A+B+C)	36	7	41	22	35	26	0	2	112	57	169

Source: AJ&K University, Muzaffarabad.

Education 2012

Poonch University Enrollment (Rawalakot)

Department	Ph.D		M.Phil/M.S/LLM		M.Sc/M.A/M.B.A		B.Sc(Hon.) /BCS/SE		Total		G.Total
	Male	Female	Male	Female	Male	Female	Male	Female	Male	Female	
A. Students strength Faculty of Sciences											
Agriculture	13	8	75	57	-	-	496	145	584	210	794
Veterinary & Animal Sciences	-	-	-	-	-	-	384	63	384	63	447
Electrical Engineering	-	-	-	-	-	-	40	-	40	-	40
Software Engineering	-	-	-	-	-	-	47	15	47	15	62
Eastern Medicine Surgery	-	-	-	-	-	-	38	68	38	68	106
Pharmacy	-	-	-	-	-	-	22	32	22	32	54
CS&IT	-	-	-	-	1	8	148	128	149	136	285
Chemistry	-	-	-	-	11	53	-	-	11	53	64
Mathematics	-	-	-	-	26	42	-	-	26	42	68
Physics	-	-	-	-	34	30	-	-	34	30	64
Zoology	-	-	-	-	11	54	-	-	11	54	65
Total (A)	13	8	75	57	83	187	1,175	451	1,346	703	2049
B. Students strength Faculty of Arts											
English	-	-	-	-	6	27	-	-	6	27	33
Economics	-	-	-	-	8	24	-	-	8	24	32
Sociology	-	-	-	-	4	19	-	-	4	19	23
Business Administration	-	-	-	-	61	61	33	21	94	82	176
Commerce	-	-	-	-	19	23	-	-	19	23	42
Total: (B)	-	-	-	-	98	154	33	21	131	175	306
G. Total; (A+B)	13	8	75	57	181	341	1208	472	1477	878	2355

Source: Poonch University, Rawalakot.

Staff Position

a) Faculty of Poonch University, Rawalakot.

Departments	Staff Positions												G. Total
	Professor		Associates Professor		Assistant Professor		Lacturer		Research Associate		Non teaching Staff		
	M	F	M	F	M	F	M	F	M	F	M	f	
Agronomy	2	0	1	0	2	0	1	0	0	0	3	0	9
Entomology	4	0	0	0	0	0	1	1	0	0	3	0	9
Food & Technology	2	0	0	0	2	0	2	0	0	1	1	0	8
Horticulture	3	0	1	0	2	0	2	1	0	1	2	0	12
PB &MG	3	0	0	0	2	0	2	1	0	0	3	0	11
Soil Sciences	1	0	0	0	3	1	1	1	0	0	4	0	11
Plant pathology	1	0	0	0	1	0	0	0	1	0	1	0	4
Veterinary & Animal Sciences	2	0	0	0	1	0	14	0	0	0	9	0	26
Health Sciences	0	0	0	0	1	1	4	0	3	0	1	0	10
SC & IT	0	0	0	0	1	1	2	6	0	0	7	0	17
Business Administration	0	0	2	0	0	0	0	0	1	0	2	0	5
Humanities & Social Sciences	0	0	1	0	2	0	4	1	1	0	2	0	11
Basic & Applied Sciences	1	0	2	0	2	0	4	1	0	0	4	0	14
Engineering & Technology	1	0	0	0	1	0	1	0	0	0	4	0	7
General Administration	0	0	0	0	0	0	0	0	0	0	109	1	110
Total	20	0	7	0	20	3	38	12	6	2	155	1	264

Source: Poonch University, Rawalakot.

Mirpur University of Science and Technology (MUST)
2012

Name of Faculties	Number of Students												Total
	B.A/L.L.B		B.Sc		B.A/B.Sc. Hons		M.A/M.Sc./MBA		M.Phil		Ph.D		
	M	F	M	F	M	F	M	F	M	F	M	F	
Electrical Engineering	-	-	-	-	374	36	-	-	122	16	-	-	548
Power Engineering	-	-	-	-	154	10	-	-	-	-	-	-	164
Electrical Technology	-	-	-	-	150	-	-	-	-	-	-	-	150
Mechanical Engineering	-	-	-	-	323	22	-	-	21	-	-	-	366
Computer Sys. Engg.	-	-	-	-	218	62	-	-	21	4	-	-	305
Civil Engineering	-	-	-	-	336	10	-	-	-	-	-	-	346
Software Engineering	-	-	-	-	272	42	-	-	-	-	-	-	314
CS&IT	-	-	-	-	348	105	52	23	-	-	-	-	528
Physics	-	-	-	-	-	-	37	59	19	7	-	-	122
Chemistry	-	-	-	-	-	-	9	88	10	20	1	-	128
Mathematics	-	-	-	-	25	34	17	75	12	17	-	-	180
Botany	-	-	-	-	-	-	23	73	4	24	2	-	126
Zoology	-	-	-	-	-	-	27	70	8	28	-	-	133
Bio Technology	-	-	-	-	14	16	-	-	6	22	3	-	61
Home Economics	-	-	-	129	-	-	-	21	-	-	-	-	150
Art & Design	-	-	-	-	-	-	-	-	-	-	-	-	-
Islamic Studies	-	-	-	-	-	-	10	39	9	19	-	-	77
English	-	-	-	-	-	-	18	68	-	-	-	-	86
Economics	-	-	-	-	13	14	24	49	-	-	-	-	100
Education	15	30	-	-	-	-	12	16	-	-	-	-	73
Law	118	11	-	-	-	-	-	-	-	-	-	-	129
Business & Management Studies	-	-	202	30	-	-	171	57	-	-	-	-	460
Banking and Finance	-	-	48	6	-	-	-	-	-	-	-	-	54
Grand Total	133	41	250	165	2227	351	400	638	232	157	6	-	4600

Source:-Mirpur University of Science and Technology (MUST)

Name of Faculties	Staff Positions												Total
	Professor		Associate Professor		Assistant Professor		Lecturer		Research Associate		Non Teaching Staff		
	M	F	M	F	M	F	M	F	M	F	M	F	
Faculty of Engineering	5	-	5	-	19	-	25	2	20	9	79	2	166
Faculty of Science	4	1	1	1	5	4	11	15	7	13	34	3	99
Faculty of Arts	1	-	1	1	6	5	7	13	4	12	20	14	84
G. Total	10	1	7	2	30	9	43	30	31	34	133	19	349

Source:-Mirpur University of Science and Technology (MUST)

District Wise Number of Government Institutions by Level (Year 2012-13)

S.No	District	Schools									Colleges					
		Mosque	Primary	Middle	High	Higher Secondary	Industrial School	Literacy Centre	Village Workshop	Total	Intermediate	Degree	Post Graduate	College of Education	Poly Technique	Total
1	Bagh	90	256	157	86	10	-	-	-	599	14	03	04	01	-	22
2	Bhimber	163	271	104	72	05	-	01	01	617	10	08	-	-	-	18
2	Hatian	80	197	61	36	02	-	01	01	378	05	04	-	-	-	09
3	Haveli	29	151	42	29	01	-	-	-	252	01	02	-	-	-	03
4	Kotli	192	566	151	117	08	02	-	01	1037	19	12	01	-	-	32
5	Mirpur	129	278	93	88	04	-	-	02	594	11	11	01	01	-	24
6	Mzd.	168	469	133	107	11	-	01	02	891	07	06	02	-	-	15
7	Neelum	66	148	33	28	01	-	01	-	277	06	02	-	-	-	08
8	Poonch	131	426	148	109	10	02	-	02	828	13	07	02	-	01	23
9	Sudhnoti	104	247	86	51	01	-	-	01	490	10	02	02	-	-	14
Total		1152	3009	1008	723	53	04	04	10	5963	96	57	11	02	01	167

Source: EMIS Education Department, Muzaffarabad.

Detail of Teaching Staff in College Level Institutions

Designation	Male	Female	Total
Professor	12	10	22
Associate Professor	182	148	330
Assistant Professor	412	337	749
Lecturer	605	495	1100
Commerce Instructor	17	01	18
Computer instructor	59	34	93
Senior Teachers	312	174	486
Technical Teachers	19	03	22
Total	1618	1202	2820

Detail of teaching/Non-teaching Staff in Education Institutions

S.No.	Sub-Sector	Gazetted	Non-Gazetted	Total
1.	Secretariat Education Colleges	09	19	28
2.	Directorate Education Colleges	26	43	69
3.	Divisional Directorate Colleges Mzd	04	10	14
4.	Divisional Directorate Colleges Mirpur	04	10	14
5.	Colleges	2961	2042	5003
6.	Directorate of Education Planning	09	21	30
7.	Engineering Cell	08	40	48
8.	Khurshid Library Muzaffarabad.	04	24	28
Total		3025	2209	5234

Level Wise Student Enrollment in Colleges

Level	Boys	Girls	Total
Postgraduate Colleges	12598	10954	23552
Degree Colleges	6932	11005	17937
Intermediate Colleges	7398	6159	13556
College of Education	369	117	486
Total	27297	28235	55531

Source:- Directorate of Education Colleges, Muzaffarabad

**District Level and Gender-Wise Detail of Colleges AJ&K
(Public Sector)**

District	Post Graduate			Degree			Intermediate			Total
	Male	Female	Co-Education	Male	Female	Co-Education	Male	Female	Co-Education	
Mzd.	01	01	-	02	04	-	05	01	01	15
Hattian	-	-	-	03	01	-	02	03	-	09
Neelum	-	-	-	01	01	-	05	01	-	08
Bagh	01	02	01	01	02	-	05	09	-	21
Haveli	-	-	-	01	01	-	01	-	-	03
Poonch	01	01	01	03	04	-	04	09	-	23
Sudhnuti	01	01	-	-	02	-	07	03	-	14
Mirpur	01	-	01	04	07	-	04	07	-	24
Kotli	01	-	-	06	06	-	08	11	-	32
Bhimber	-	-	-	03	05	-	07	03	-	18
Sub Total	06	05	03	24	33	-	48	47	01	167
G. Total	14			57			96			

Source:- Directorate of Education Colleges, Muzaffarabad

Student Age/Class Wise Enrollment for the Year 2012-13

District	Gender	Primary(05-09Year)						Middle(10-12 Year)				High(13-14)Year			G. Total
		1 Class	2 Class	3 Class	4 Class	5 Class	Total	6 Class	7 Class	8 Class	Total	9 Class	10 Class	Total	
Bagh	Male	2788	2470	2500	2617	2754	13129	2484	2534	2463	7481	2096	1804	3900	24510
	Female	2252	1992	1938	1878	1878	9938	1865	1967	1813	5645	982	905	1887	17470
Bhimber	Male	2458	2549	2523	2514	2370	12414	1854	1948	1823	5625	1167	903	2070	20109
	Female	2080	2037	1973	1980	1891	9961	1774	1738	1623	5135	992	863	1855	16951
Hattian	Male	2393	2220	2094	2091	2317	11115	1996	1723	1611	5330	908	850	1758	18203
	Female	1437	1205	1124	1197	1088	6051	880	730	614	2224	326	339	665	8940
Haveli	Male	1372	1410	1298	1195	1138	6413	904	852	953	2709	785	602	1387	10509
	Female	912	872	882	889	803	4358	655	531	525	1711	354	281	635	6704
Kotli	Male	5523	5612	5703	5652	5330	27820	3553	3522	3469	10544	2387	2138	4525	42889
	Female	3361	3456	3222	3242	3104	16385	2616	2512	2477	7605	1774	1477	3251	27241
Mirpur	Male	1860	1090	1900	1982	2073	8905	1775	1779	1944	5498	1332	1459	2791	17194
	Female	2323	2215	2264	2254	8808	17864	2364	2165	2373	6902	1656	1577	3233	27999
Mzd.	Male	4654	4107	3723	3802	4072	20358	3353	3226	3530	10109	2261	2094	4355	34822
	Female	3131	2718	2651	2733	2701	13934	1964	1832	1862	5658	1266	1252	2518	22110
Neelum	Male	2180	2033	1740	1679	1767	9399	1383	1413	1353	4149	705	659	1364	14912
	Female	1134	959	833	777	765	4468	569	474	535	1578	217	223	440	6486
Poonch	Male	2664	2594	2538	2455	2581	12832	2142	2196	2099	6437	1552	1407	2959	22228
	Female	2602	2335	2304	2262	2202	11705	1939	1861	1697	5497	1151	1130	2281	19483
Sudhnoti	Male	1448	1549	1754	1688	1842	8281	1529	1528	1403	4460	1100	945	2045	14786
	Female	1573	1503	1503	1408	1521	7508	1313	1325	1237	3875	917	818	1735	13118
Total	Male	27340	25634	25773	25675	26244	130666	20973	20721	20648	62342	14293	12861	27154	220162
	Female	20805	19292	18694	18620	24761	102172	15939	15135	14756	45830	9635	8865	18500	166502
G.Total		48145	44926	44467	44295	51005	232838	36912	35856	35404	108172	23928	21726	45654	386664

District Wise Number of Teachers of Govt. Schools of AJK for the Year (2012-13).

Designation	Gender	Bagh	Bhimber	Hattian	Haveli	Kotli	Mirpur	Muzaffarabad	Neelum	Poonch	Sudhnoti.	Total
Primary Teacher	Male	833	825	564	332	1400	767	1359	408	998	583	8069
	Female	769	739	369	245	1066	792	991	236	1111	585	6903
	Total	1602	1564	933	577	2466	1559	2350	644	2109	1168	14972
Junior Teacher	Male	526	414	283	166	745	461	691	187	675	336	4484
	Female	427	385	123	89	459	397	440	73	548	220	3161
	Total	953	799	406	255	1204	858	1131	260	1223	556	7645
Senior Teacher	Male	314	220	177	97	390	289	409	106	380	163	2545
	Female	277	253	78	65	315	271	322	52	341	154	2128
	Total	591	473	255	162	705	560	731	158	721	317	4673
G. Total	Male	1673	1459	1024	595	2535	1517	2459	701	2053	1082	15098
	Female	1473	1377	570	399	1840	1460	1753	361	2000	959	12192
	Total	3164	2836	1594	994	4375	2977	4212	1062	4053	2041	27290

Source: EMIS Education Department, Muzaffarabad.

Student Class Wise Enrollment for the Year (2012-13)

District	Gender	Un-admitted	Kachi	Class-1	Class-2	Class-3	Class-4	Class-5	Class-6	Class-7	Class-8	Class-9	Class-10	Total
Bagh	Male	2656	3763	2788	2470	2500	2617	2754	2484	2534	2463	2096	1804	30929
	Female	1708	3400	2252	1992	1878	1878	1878	1865	1967	1813	982	905	22518
Bhimber	Male	1212	3300	2458	2549	2514	2514	2370	1854	1948	1823	1167	903	24612
	Female	671	3037	2080	2073	1980	1980	1891	1774	1738	1623	992	863	20702
Hattian	Male	2632	3589	2393	2220	2091	2091	2317	1996	1723	1611	908	850	24421
	Female	991	2375	1437	1205	1197	1197	1088	880	730	614	326	339	12379
Haveli	Male	983	2007	1372	1410	1195	1195	1138	904	852	953	785	602	13396
	Female	349	1083	912	872	889	889	803	655	531	525	354	281	8143
Kotli	Male	5731	7811	5523	5612	5652	5652	5330	3553	3522	3469	2387	2138	56380
	Female	2457	4837	3361	3456	3242	3242	3104	2616	2512	2477	1774	1477	34555
Mirpur	Male	918	2129	1860	1909	1982	1982	2073	1775	1779	1944	1332	1459	21142
	Female	864	2485	2323	2215	2254	2254	2208	2364	2165	2373	1656	1577	24738
Muzaffarabad	Male	3679	6570	4654	4107	3802	3802	4072	3353	3226	3530	2261	2094	45150
	Female	1641	4109	3131	2718	2733	2733	2701	1964	1832	1862	1266	1252	27942
Neelum	Male	2050	2184	2180	2033	1679	1679	1767	1383	1413	1353	705	659	19085
	Female	955	1151	1134	959	777	777	765	569	474	535	217	223	8536
Poonch	Male	2308	4511	2664	2594	2455	2455	2581	2142	2196	2099	1552	1407	28964
	Female	1834	4506	2602	2335	2262	2262	2202	1939	1861	1697	1151	1130	25781
Sudhnoti	Male	1000	2803	1448	1549	1688	1688	1842	1529	1528	1403	1100	945	18523
	Female	1175	2798	1573	1503	1408	1408	1521	1313	1325	1237	917	818	16996
Total	Male	23169	38667	27340	26453	25558	25675	26244	20973	20721	20648	14293	12861	282602
	Female	12645	29781	20805	19328	18620	18620	18161	15939	15135	14756	9635	8865	202290

Source: EMIS Education Department, Muzaffarabad.

Forest 2012

Total Geographical Area: 1.330 Million Hectares				
3.286 Million Acres				
General Distribution of Land Utilization				
	Area (Million)		% of	
Land Utilization	Hec.	Acre	FDA*	TGA**
A) Area Controlled By Deptt. Of Forest	0.567	1.400	100.0	42.60
1. Area Under Productive Forests	0.379	0.936	66.8	28.5
i. Area under Actual Forest				
<input type="checkbox"/> Area Under Deodar	0.018	0.044	3.1	1.3
<input type="checkbox"/> Area Under Kail	0.036	0.090	6.4	2.7
<input type="checkbox"/> Area Under Fir	0.042	0.103	7.4	3.2
<input type="checkbox"/> Area Under Pine	0.057	0.141	10.1	4.3
<input type="checkbox"/> Area Under Broad Leaves Trees	0.001	0.002	0.1	0.1
Sub-Total (i)	0.154	0.380	27.1	11.6
ii. Area Under Thinly wooded Forests				
2) Non Productive Area	0.188	0.464	33.2	14.1
B Area Under Cultivation	0.173	0.427	-	13.0
C Area Under Cultivable Waste	0.032	0.080	-	2.4
D Area Under Uncultivable Waste	0.0558	1.379	-	42.0
Total Geographical Area (A+B+C+D)	1.330	3.286	-	100
<u>Forest Production-</u>				
Total Annual Forest Production			6687000 Cft	
Annual Production /Acre			4.77Cft	
Per Capita Forest Area			0.35Acre	
Per Capita Standing Volume			299.5 Cft	
Per Capita Timber (Yield)			1.65Cft	

* Forest Demarcated Area.

** Total Geographical Area

Source: AJ&K Forest Department, Muzaffarabad

Area by District and under the Control of AJK Forest Department 2012

District	Coniferous	Irrigated Plantation	Reverian Bela Forest	Scrub Forest	Coastal Forest	Range Lands	Total
IN AJK	1.007	-	-	0.023	-	0.370	1.400
Muzaffarabad	0.109	-	-	0.001	-	0.012	0.122
Neelum	0.360	-	-	-	-	0.317	0.677
Hattian	0.088	-	-	-	-	0.008	0.096
Bagh	0.078	-	-	0.003	-	0.018	0.099
Haveli	0.056	-	-	0.002	-	0.012	0.070
Poonch	0.050	-	-	0.003	-	0.003	0.056
Sudhnoti	0.048	-	-	0.004	-	-	0.052
Mirpur	0.001	-	-	0.005	-	-	0.006
Kotli	0.158	-	-	0.001	-	-	0.159
Bhimber	0.059	-	-	0.004	-	-	0.063

Source: AJ&K Forest Department, Muzaffarabad

District Wise List of Forest Rest Houses in AJK

S. #	District	Forest Rest Houses	Status
1	Muzaffarabad	1. Rest House Danna	Damaged during earthquake
2	Hattian	1. Rest House Dingian, Chikar 2. Rest House Leepa 3. Rest House Daokhan 4. Rest House Noon Bagla, Chikar	Damaged during earthquake = = = Is in working condition. Damaged during earthquake
3	Neelum	1. Rest House Keran 2. Rest House Dawarian 3. Rest House Halmat 4. Rest House Kel 5. Rest House Sharda	Under Construction = = = Construction works completed = = = = = =
4	Bagh	1. Rest House Dheerkot 2. Rest House Mahmood Gali 3. Dheerkot Huts	Is in working condition. Damaged during earthquake = = =
5	Haveli	1. Rest House Forward Kahutta	Damaged during earthquake
6	Sudhnuti	1. Rest House Pallandri 2. Rest House Baloch 3. Rest House Trarkhal	Damaged during earthquake Is in working condition. Under Construction
7	Poonch	1. Rest House Abbaspur	Is in working condition.
8	Kotli	1. Rest House Sehnsa 2. Rest House Sehna Banah 3. Rest House Mansooh 4. Rest House Choach 5. Rest House Broohian	Is in working condition = = = = = = = = = = = =
9	Mirpur	1. Rest House Mirpur	Is in working condition (Presently under use of Ehtsab. Bureau).
10	Bhimber	1. Rest House Bhimber 2. Rest House Choki (Smahni)	Is in working condition = = =

Source: AJ&K Forest Department, Muzaffarabad.

Health 2012
Manpower & Statistics

Health Managers	62
Specialists	232
Medical Officers	502
Dental Surgeons	68
Other Gazetted Officers	274
Nurses	351
Lady Health Visitors (LHVs)	253
Lady Health Supervisors	138
Lady Health workers	3068
Dias/Midwives	100
Paramedics	2884
Hospital Beds	2285
RHC Beds	408
BHU Beds	436
Population per Hospital Bed	1327
Population per Doctor	4807
Population per Dental Surgeon	61074
Bed Occupancy Rate	64%
Primary Health Cares Services.	60.5%

Source: Directorate of Health Muzaffarabad

**Number of Hospitals/BHUs/Dispensaries and Rural Health Centers with their Beds
By Government Level in AJK Districts for the Year 2012**

District	Public Sector					
	Hospital		BHUs/Dispensaries		RHCs	
	NO.	BEDS	NO.	BEDS	NO.	BED S
Muzaffarabad	3	550	36	72	4	48
Neelum	2	130	20	40	1	12
Hattian	1	50	12	24	3	36
Bagh	2	250	17	54	6	72
Haveli	1	50	06	12	1	12
Poonch	2	250	22	44	5	60
Sudhnoti	2	120	10	20	3	36
Mirpur	3	350	25	50	4	48
Kotli	4	385	35	70	4	48
Bhimber	1	150	25	50	3	36
Total	21	2285	208	436	34	408

Source: Directorate of Health Muzaffarabad

Health 2012

Type	Mzd	Hattian	Neelum	Mirpur	Bhim	Kotli	Poonch	Haveli	Bagh	Sudh.	Total
AIMS	1	0	0	0	0	0	0	0	0	0	1
CMHs	1	0	0	0	0	0	1	0	0	0	2
DHQ Hospitals	0	0	1	1	1	1	0	0	1	1	6
THQ Hospitals	0	1	1	1	0	3	1	1	0	0	8
Civil Hospitals	0	0	0	0	0	0	0	0	0	1	1
TB General Hospital	0	0	0	0	0	0	0	0	1	0	1
Institute of Cardiology	0	0	0	1	0	0	0	0	0	0	1
Dental hospital	1	0	0	0	0	0	0	0	0	0	1
RHCs	4	3	1	4	3	4	5	1	6	3	34
BHUs	36	12	20	25	25	35	22	6	17	10	208
Dispensaries	14	4	1	11	13	14	7	10	9	10	93
FAPs	41	14	10	17	20	63	28	12	23	16	244
MCH Centers	37	11	11	24	16	36	22	4	23	13	197
TB/Leprosy Centers	8	5	4	8	6	9	6	4	10	7	67
Unani Dispensaries	2	0	0	2	0	5	0	0	2	0	11
Dental Centers	5	0	2	6	4	8	4	0	6	4	39
Teaching Inst. (Nursing Sch./Paramedics Inst.)	1	0	0	4	0	1	0	0	1	0	7
EPI Centers	55	24	20	31	40	60	38	16	33	26	343
Malaria Centers	44			28	25	27	22	-	32	11	189
In Service Training Centers	1	0	0	1	0	0	0	0	1	0	3

Source: Directorate of Health Muzaffarabad

Number of Doctors, Nurses, L.H.VS & Dais/Midwives by District AJK 2012

District	Doctors			Nurses			Pharmacist	Drug Inspector		Health Education officer		L.H. V	Dias/ Mid Wives
	Male	Female	Total	Male	Female	Total		DI	CDI	HEO	ADHE		
	Muzaffarabad	85	53	138	0	84		84	2	1	1		
Neelum	21	2	23	0	22	22	0	1	0	0	0	11	3
Hattian	15	3	18	0	10	10	0	0	0	0	0	11	3
Bagh	48	6	54	0	31	31	1	1	0	1	0	27	4
Haveli	9	0	9	0	7	7	0	0	0	0	0	11	13
Poonch	52	22	74	0	51	51	1	1	0	0	0	39	12
Sudhnoti	22	4	26	0	4	4	1	1	0	1	0	19	6
Mirpur	28	31	59	0	76	76	1	1	0	1	0	40	18
Kotli	53	14	67	0	41	41	1	1	0	1	0	40	15
Bhimber	26	8	34	0	25	25	1	1	0	0	0	17	8
Total	359	143	502	0	351	351	8	8	1	5	1	253	100

Source: Directorate of Health Muzaffarabad

Industries & Minerals 2012

District wise Industrial units

Type	Public	Private	Total
Muzaffarabad	01	331	332
Hattian	--	86	86
Neelum	--	72	72
Mirpur	--	277	277
Bhimber	--	510	510
Kotli	--	257	257
Poonch	--	87	87
Bagh	--	52	52
Haveli	--	31	31
Sudhnoti	--	39	39
Total	01	1742	1743

Type of Industry

Name	Nos.	Name	Nos	Name	Nos.
Wood Work & Furniture House	133	Tyre & Rubber Factory	-	Food Industry & Beverage	90
Flour Mills	09	Main Hotels	59	Shoe Industries	89
Paper Mills	04	Plastic industries	02	Scooter/Rickshaw (Vespa)	04
Arms Factories	40	Steel re-rolling & Furnaces	02	Cosmetics	03
Poultry Farms	783	Printing Press	24	PVC Pipe	04
Textile Mills/Weaving	05	Crush Machines	149	Ice Factory	10
Steel Works	176	RCC pipe Industries	30	Miscellaneous	134

Details of Investment

Industrial Estate	06	Industrial Unit Under Construction	169
Total Area	7545- Kanal	Industrial Unit in Production	146
Sanctioned Investment	22668.807 Million	Sick Units	68
Investment Made	13500 Million	Labour Employed	17240
Sanctioned Unit	468		

Source :- Directorate of Industries Muzaffarabad.

Industrial Minerals 2012

A. Major Minerals / Industrial Minerals			C. Metallic Minerals		
S.#	Name of Mineral	Reserve (In million tons)	S.#	Name of Mineral	Reserve (In million tons)
1	Dolomite	4.00	1	Gold	Under Prospection
2	Gypsum	5.00	2	Silver	Under Prospection
3	Marble	24.000	3	Copper	Nil
4	Soapstone	0.050	4	Lead Zinc	Under Prospection
5	Quartzite	2.00	5	Tungsten	Nil
6	Graphite	1.000	6	Pyrite	Under Prospection
7	Feldspar	0.100	7	Rare earth elements	Under Prospection
8	Granite	In-exhaustible	8	Bauxite	07.000
9	Fireclay	7.000	9	Limonite	00.065
10	Coal	30.000	Precious Stone		
11	Bentonite	4.000	1	Ruby	45.000 million gms
12	Pozolana	00.500	Semi Precious Stone		
13	Limestone	In-exhaustible	1	Tourmaline	It is found in abundance but technically reserves estimation is not possible.
14	Slate	1.500	2	Spessartine Garnet	Under prospection
A. Minor Minerals			3	Beryldo.....
1	Aggregate (Bajri)	Extensive		Aquamarinedo.....
2	Sand	Extensive		do.....

Source : Directorate of Industries Muzaffarabad.

**Azad Kashmir Small Industry Institutions 2012
(AKSIC)**

S#	Name of Scheme	MZD	Neelum	Bagh	Poonch	Sudh.	Kotli	Bhim.	Mirpur	Total
1	Carpet weaving Development Center	1	-	-	-	1	-	-	-	2
2	Wood Working/Carving development Center	1	1	1	1	-	1	-	-	5
3	Traditional Kashmiri Handicrafts (Shawl- Bafi) Development Center	1	-	-	-	-	-	-	-	1
4	Establishment of Solar Energy Development Center	-	-	1	--	--	1	--	1	3
Grand Total		3	1	2	1	1	2	-	1	11

Districts wise Technical Education Institution AJKTEVTA 2012.

S#	Name of Institution	MZD	Hattian	Neelum	Bagh	Haveli	Poonch	Sudh,	Kotli	Bhim.	Mirpur	Total
1	Polytechnic	-	-	-	-	-	1	-	-	-	-	1
2	Technical training Institute	-	-	-	-	-	-	-	-	-	1	1
3	Vocational Training Institute(Male)	2	-	1	1	-	1	2	1	1	1	10
4	Vocational Youth Centers(Male)	1	-	-	1	-	-	1	1	1	-	5
5	Industrial Training Centers (Male)	-	1	1	-	-	-	-	-	-	-	2
6	Woman Industrial Schools (Female)	11	2	2	3	1	2	2	4	4	3	34
7	Multi Trade Centers	1	1	-	-	-	1	-	1	-	1	5
8	Vocational Youth Centers (Female)	1	-	-	-	-	-	-	1	-	1	3
9	Skill Development center(SDC)	18	10	3	11	3	7	3	13	8	5	81
Grand Total		34	14	7	16	4	11	8	21	14	11	142

Source: AJKTEVTA, Muzaffarabad

Information Technology 2012

Intervention	Accumulative achievements 2012
Establishment of IT Training Centers in AJK	10
Training of Govt. Employees/Youth	15935
Establishment of Computer Labs in Degree Colleges AJK	51
Establishment of Computer Labs in Inter Colleges of AJK	38
Establishment of Computer Labs in High/Higher Secondary Schools	280
Establishment of Computer Labs in Middle Schools	100
Automation of Minister Offices	25
Automation of Secretariat Departments in AJK	10
Launching of websites (for all departments)	27 Departments

Source: - Information Technology Board Muzaffarabad.

**Local Govt. & Rural Development
2012**

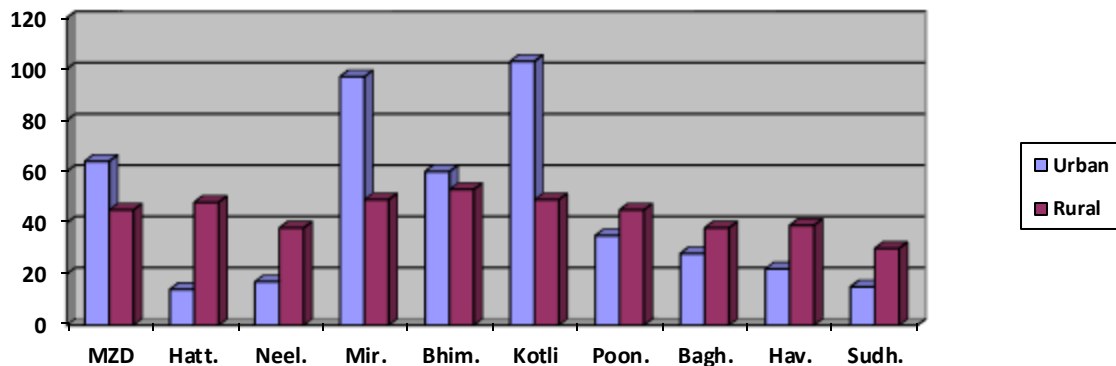
Piped Water Supply in Rural Areas

District wise	Neelum	M,abad	Hattian	Bagh	Haveli	Poonch	Sudhnoti	Kotli	Mirpur	Bhimber	Total
Villages	88	415	167	140	91	122	61	234	246	207	1771
Rural population	0.177	0.542	0.229	0.347	0.143	0.487	0.274	0.740	0.291	0.409	3.638
Piped water facilities benefited population	0.063	0.272	0.105	0.143	0.054	0.249	0.090	0.365	0.216	0.214	1.771
Piped water facilities in %age	35.6	50	45.9	41.2	37.8	51.1	38.5	49.3	74	52.3	48.7

**Physical Planning & Housing 2012
Piped Water Supply in Urban Areas**

District wise	Neelum	M,abad	Hattian	Bagh	Haveli	Poonch	Sudhnoti	Kotli	Mirpur	Bhimber	Total
Urban population(in million)	0.008	0.126	0.016	0.025	0.004	0.074	0.022	0.066	0.154	0.023	0.518
Houses with in municipal limits (No.)	2750	24714	4785	6785	1142	13427	4600	8850	22300	3650	93003
Houses with Piped water facility (No.)	460	15939	656	1894	250	4750	700	8673	19136	2236	57599
Piped water facilities in %age	17	64	14	28	22	35	15	103	97	60	62

Piped Water Supply in %age



Source:-LG&RD and PPH Department, Muzaffarabad

Power 2012
Electric Connection

S. #	District	Number of Consumers			
		Domestic	Commercial	Industrial	Total
1	Neelum	6924	515	2	7441
2	Muzaffarabad	59736	8401	158	68295
3	Hattian	23179	1416	24	24619
4	Bagh	41977	3090	49	45116
5	Haveli	6267	522	1	6790
6	Poonch	62833	5668	85	68586
7	Sudhnoti	32636	2149	2	34787
8	Kotli	85120	14150	505	99775
9	Mirpur	78066	19960	687	98713
10	Bhimber	56427	5940	318	62685
	Total	453165	61811	1831	517770

Power 2012

Power Facilities	Neelum	MZD	Hattian	Bagh	Haveli	Poonch	Sudh	Kotli	Mirpur	Bhim	Total
Small Hydel Station (Nos.)	4	1	3	0	0	0	0	0	0	0	8
Villages Electrified (Nos.)	81	387	155	107	91	119	62	229	231	208	1670
Kilometer of HT. Line (Km)	336	913	239	1564	399	1038	717	1588	1513	645	8952
Kilometer of LT. Line(Km)	440	3334	2545	1311	629	1600	956	2870	2291	793	16769
Grid station (Nos.)	-	4	1	2	0	2	4	3	6	1	23
Transform/sub – station (Nos.)	254	1381	408	1370	278	1183	699	2149	2125	772	10619
Consumers (Nos.)	7509	68363	24672	45136	6790	68702	34787	100092	98832	62887	517770
Installed Grid Capacity (MVA)	0	73	8	41	0	65	23.3	112	273	52	647.3
Per Capita Electricity Delivered(KWH)	60	330	231	226	69	224	135	364	994	366	347
Population Served (Million)	0.097	0.523	0.192	0.344	0.085	0.521	0.277	0.735	0.441	0.401	3.616

Source: Directorate of Power Department, Muzaffarabad.

Status of Hydro Power Projects in AJK

S.#	Status	No.	Capacity(MW)
1	Commissioned (WAPDA 1, HEB 11, EPC/PPIB 2)	14	1129.67
2	Under Construction		
	I. Hydro Electric Board (HEB)	11	64.25
	II. PPC/PPIB	1	147.0
	III. WAPDA	1	969.0
3	Projects Under Process in Public Sector	20	336.47
4	Project Under Process in Private Sector	28	4158.9
5	Sites Available/Feasibility in Progress	13	1877.16
TOTAL		88	8682.45

Projects Completed/ Commissioned

S.#	PROJECT SITE	CAPACITY (MW)	DISTRICT
1	Mangla	1000.00	Mirpur
2	Jagran	30.4	Neelum
3	LEEPA	1.60	Muzaffarabad
4	Kathai	1.60	Muzaffarabad
5	Kathai Ext.	1.60	Muzaffarabad
6	Kel	0.4	Neelum
7	Kundal Shahi	2.00	Neelum
8	Sharian HPP	3.2	Hattian
9	Qadirabad, Bagh	3.00	Bagh
Total		1043.8	

Project under Construction in Public Sector

S #	Project Site	Capacity (MW)	Executing Agencies
1	Sharda, Neelum	3.000	HEB
2	Battar, Havelli	4.800	HEB Federal Funder
3	Dhannan, Kotli	1.500	HEB Federal Funder
4	Rahra, Bagh	3.200	HEB
5	Halmat, Neelum	0.320	HEB
6	Guin Nullah, Poonch	0.250	HEB
7	Hillan, Havelli	0.600	HEB
8	Ranger-I, Poonch	0.600	HEB
9	Ranger-II, Poonch	0.450	HEB
10	Neelum-Jhelum	969.000	WAPDA
11	Jhing HPP Muzaffarabad	14.400	HEB
12.	KEL-I	0.750	HEB
Total		998.87	

Source: Hydro Electric Board, Muzaffarabad.

Projects under Construction in Private Sector

S#	Project site	Capacity(MW)	Sponsor
1	Patrind	147.00	K Water & Sambu
Completed			
1.	New Bong Escape	84.0	Laraib Energy
2.	Kharhi HPP	1.00	
Total		85.00	

Source: Hydro Electric Board, Muzaffarabad.

Postal Facilities 2012

Districts	General post offices(GPOs)	Extra departmental branch post offices	Extra departmental sub post offices	Sub post offices	Head post offices
Muzaffarabad	01	27	05	08	0
Hattian	0	08	0	06	0
Neelum	0	10	01	02	01
Sudhnoti	0	33	02	13	01
Poonch	01	43	02	19	02
Bagh	01	27	04	10	0
Haveli	0	15	0	01	01
Mirpur	01	26	0	18	02
Kotli	01	55	04	15	0
Bhimber	01	36	02	15	02
Total	06	280	20	107	09

Source: Office of the Dy. General Post Sector Head quarter AJ&K, MZD.

Police 2012

Territorial Hierarchy of Police Units in Azad Kashmir

District	Sub Division	Police Station	Police Posts	Check Post
Muzaffarabad	2	7	5	3
Hattian	3	3	1	0
Neelum	2	3	3	1
Bagh	3	2	2	7
Haveli	3	2	1	1
Poonch	4	5	6	5
Sudhnoti	4	4	3	0
Kotli	5	6	5	3
Mirpur	2	7	2	9
Bhimber	3	4	2	13
Total	31	43	30	42

Source: Police Department Muzaffarabad.

Police 2012
Territorial Hierarchy of Police Units in Azad Kashmir

Region	Distt.	Sub Division	Police Station	Police Posts	Check Posts		
Muzaffarabad	Mzd.	Muzaffarabad	City Muzaffarabad				
			Sadar Mzd	Bararkot	Lohar Gali & Shaheed Gali		
			Civil Sectariat	Rara			
			Garhi Dupatta	Komikot			
			Danna	Qulian & Kohala			
	Hattian	Hattian	Pattika (Nasirabad)	Kohori			
				Panjgran			
				Channari			
	Neelum	Neelum	Athmaqam	Chikaar	Hattian Bala		
				Leepa			
				Leepa			
	Poonch (Rawalakot)	Bagh	Bagh	Athmiqam	Jora Bandi	Chalhana	
				Lawat	Kail & Halmat		
				Sharda	Sharda		
Bagh		Bagh	Bagh	City Bagh		Shujahabad, Noman Pura, Sudhan Galli, Coprah	
				Dheerkot	Dheerkot	Arja, Sahlian	Gujar Kohala, Khappader, Minhasa, Hans Chowkie
				Hari Ghel			
Haveli		Haveli	Haveli	Haveli/Kahuta	Kahuta	Khurshidabad	
				Khurshidabad	Bhedi		
				Mumtazabad	-		
Poonch		Poonch	Rawalakot	City Rawalakot	Baldia Rawalakot & Banjosa	Gohain Nala & Dar Gala Bazar	
				Datoot	Gandala	Arja Cross & Thala Bazar	
				Thorar	Dhilkot	Kalyari	
			Abbaspur	Abbaspur	-	-	
			Hajira	Hajira	Sehra & donga Ghambir	-	
			Thorar			-	
Sudhnoti		Sudhnoti	Sudhnoti	Pallandri	Azad Pattan & Sahlian	-	
				Trarkhal	Trarkhal		-
				Baloch	Baloch	Bassari	-
				Mong	Mong	-	

Mirpur	Kotli	Kotli	City Kotli	Tatta Pani, Sarsawa & Qamroti	-	
			Khuratta	-	-	
		Sahansa	Sahansa	Holar	Chaoch Khatrass & Kalrey	
		Fetehpur (Nakiyal)	Nikial	-	-	
		Charohi	Charohi	Kaladab	-	
		Khoirata	Naar	-	Garai	
	Mirpur	Mirpur	City Mirpur	-	Bankhurman	
			Thothal	-	Khaliqabad	
			Mangla	-	Chek Post Mangla, Chittar Pari, Industrial Area	
			Islamgarh	-	Neel Kachawan	
			Afzal Pur	Jatlan	Peer gali	
		Dudyal	Dudyal	Dhangali	-	
			Chaksawari	-	Palak Pull, Sorri Gali	
	Bhimber	Bhimber	City Bhimber	Dheri Watan	-	
		Samani	Chowkie Samani	-	Dheri Wattan, Bhring, Mughal Pura, Pindi Chujah Cross	
		Barnala	Barnala	Singri	Jhandi, Hazari, Kalyaan Bani, Nandpur, Dallah	
			Ali Baig	-	Alibaig, Kangrah	
	3	10	31	43	30	42

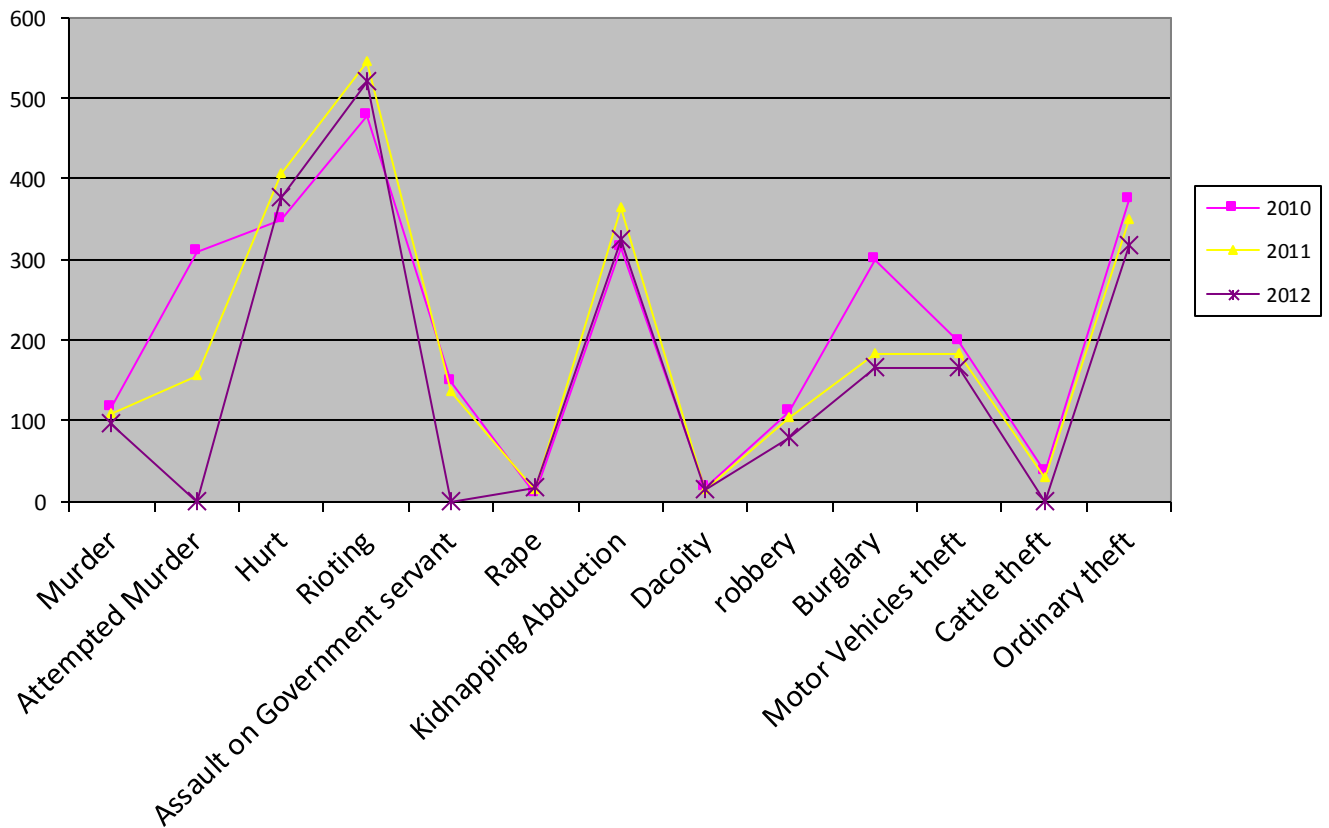
District Wise Police Crime Report 2012

Districts	All Reported	Murder	Attempted Murder	Hurt	Rioting	Assault on Government Servants	Rape	Kidnapping/ Abduction	Dacoity	Robbery	Burglary	Motor Vehicles Theft	Cattle Theft	Ordinary Thefts	Misc.
Muzaffarabad	779	13	-	55	86	-	4	73	-	6	49	21	-	51	442
Neelum	109	1	-	10	11	-	-	9	-	2	9	2	-	4	63
Hattian	145	4	-	8	20	-	-	22	-	2	4	-	-	6	79
Haveli	117	2	-	9	11	-	-	5	-	1	5	-	-	4	80
Bagh	357	6	-	10	35	-	1	42	6	2	27	9	-	20	208
Rawalakot	823	7	-	76	76	-	-	57	1	9	51	24	-	38	508
Sudhnoti	492	9	-	22	53	-	4	24	3	6	17	16	-	24	330
Kotli	1030	14	-	52	153	-	-	27	-	12	22	21	-	32	718
Mirpur	1112	19	-	51	44	-	1	38	5	27	68	63	-	114	745
Bhimber	631	20	-	83	31	-	6	27	-	11	16	8	-	23	414
Total	5595	95	-	376	520	-	16	324	15	78	268	164	-	316	3587

Source: Police Department Muzaffarabad.

Last 3 Year Crime Report

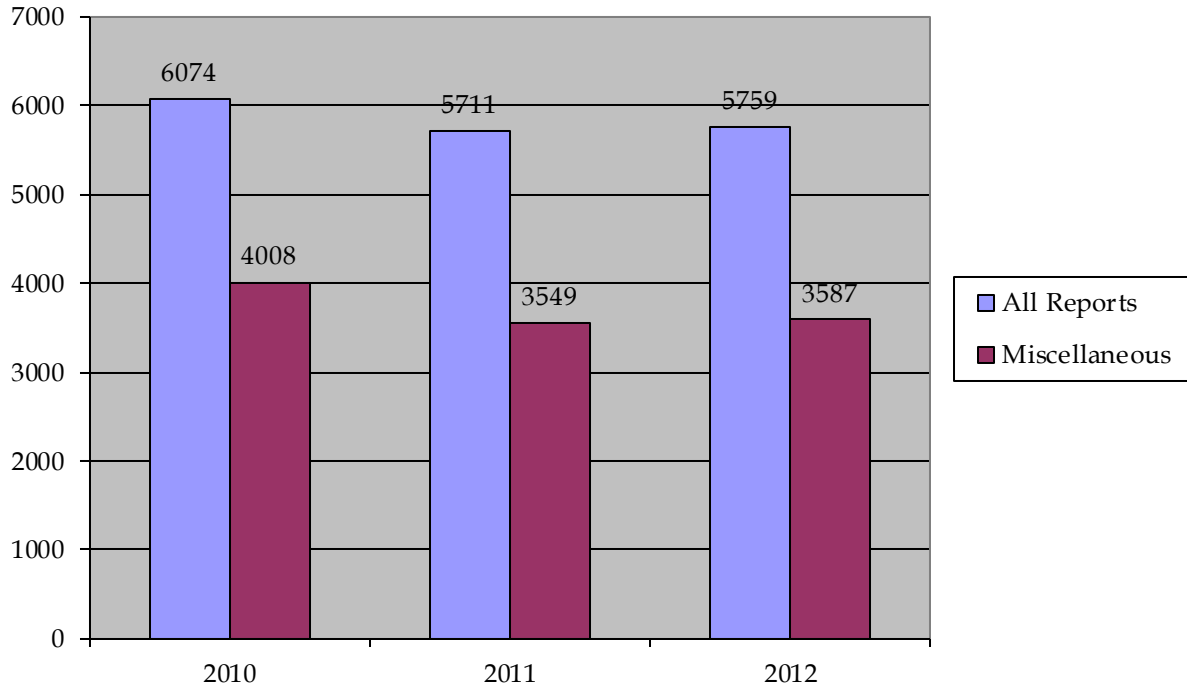
Year	Murder	Attempted Murder	Hurt	Rioting	Assault on Government servant	Rape	Kidnapping Abduction	Dacoity	robbery	Burglary	Motor Vehicles theft	Cattle theft	Ordinary theft
2010	116	308	348	478	147	9	314	17	110	300	198	36	374
2011	108	155	407	544	135	14	363	14	104	183	183	29	349
2012	95	0	376	520	0	16	324	15	78	164	164	0	316



Source: Police Department Muzaffarabad.

Year Wise Summary of Crime Report

Year	All Reports	Miscellaneous
2010	6074	4008
2011	5711	3549
2012	5759	3587

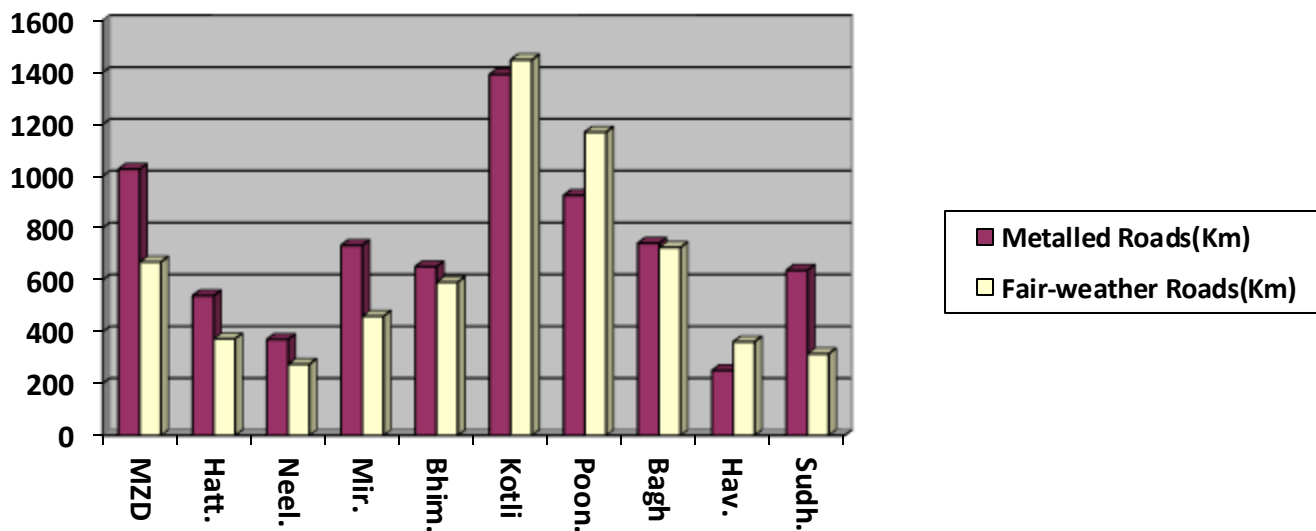


Source: Police Department Muzaffarabad.

Roads & Communication 2012

Total Roads in AJK	13739 km
Metalled Roads	7269 "
Fair-Weather Roads	6470 "
AJ&K Road Density	0.55 Per Sq.Km
Pakistan Road Density	0.33 "

District	(i) Metalled Roads (Km)			(ii) Fair-Weather Roads (Km)			G.Total (i+ii) Km
	PWD	LG&RD	Total	PWD	LG&RD	Total	
Neelum	364	6	370	70	205	275	645
Muzaffarabad	943	84	1027	54	669	723	1750
Hattian	511	28	539	84	289	373	912
Bagh	658	84	742	0	725	725	1467
Haveli	226	25	251	119	242	361	612
Poonch	845	81	926	69	1101	1170	2096
Sudhnoti	595	42	637	-	343	343	980
Kotli	1276	117	1393	0	1449	1449	2842
Mirpur	655	78	733	0	460	460	1193
Bhimber	591	60	651	44	547	591	1242
Total	6664	605	7269	440	6030	6470	13739



Source:-LG&RD and Works Department, Muzaffarabad.

**Social Welfare & Women Development Department 2012
Districts Wise Institutions**

S#	Name of Institution	Muzaffabad	Hattian	Neelum	Bagh	Haveli	Poonch	Sudhnoti	Kotli	Bhimber	Mirpur	Total
1	Dar-ul-Falah	1	-	-	1	-	1	-	1	-	1	5
2	Rural House Hold Education Centers	1	-	-	1	-	1	-	1	-	1	5
3	Kashana at Kotli	-	-	-	-	-	-	-	1	-	-	1
4	Kashana at Bagh	-	-	-	1	-	-	-	-	-	-	1
5	Shelter Homes	1	-	-	-	-	-	-	1	-	-	2
6	Women Development Centers	4	1	-	2	1	4	1	5	1	2	21
7	Establishment of Kashana at M,abad, Rawalakot, Sudhnoti, Mirpur & Bhimber.	1	-	-	-	-	1	1	-	1	1	5
8	Establishment of employment & Development Centers in AJK	1	1	3	2	-	2	1	2	1	1	14
9	Establishment of Social Welfare Complexes at Muzaffarabad	1	-	-	-	-	-	-	-	-	-	1
10	Establishment of Shaheed Benazir Women Development Centre Muzaffarabad	1	-	-	-	-	-	-	-	-	1	2
11	National Special Education Centre Muzaffarabad	1	-	-	-	-	-	-	-	-	-	1
Total		12	2	4	8	1	9	3	11	3	7	58

Source:-Social Welfare Department, Muzaffarabad.

Telecommunication 2012
District Wise Digital Exchanges

S.#	District	Exchanges	Capacity
1	Muzaffarabad	08	8736
2	Hattian	06	2908
3	Neelum	08	5340
4	Bagh	15	4752
5	Haveli	03	2600
6	Poonch (Rawalakot)	18	9624
7	Sudhnoti (Plandri)	10	2616
8	Mirpur	16	32988
9	Kotli	23	30524
10	Bhimber	07	9624
	Total	114	109712

Telecom Facilities in AJ&K- 2012

S.#	Services	2012		
		Exchanges	Capacity	Working Connection
1	PSTN	118	109722	-
2	GSM	95	400000	-
3	WLL		-	-
4	DXX	34	354	-
5	DSL	53	3968	-
6	OFC (Km)	-	-	-

Source: SCO, Muzaffarabad.

**AJK Tourism Department
2012**

Detail of Tourist Rest Houses /Huts/Youth Hostels/Motels.

District Neelum

S. #	Name of Lodges	Single Bedroom/Rent	Double Bedroom/Rent	Deluxe Room/Rent	Contact No's	Current Status
1	Tourist Lodges, Kutton	3 Rooms Rs. 2500/Room	4 Rooms Rs. 2500/Room	-	Valley Lodges: 03435800000	Leased out
2	Tourist Lodge, Neelum (Keran)	-	3 Rooms Rs. 1600/Room	1 Room Rs. 2100/Room	00925822921317	
3	Tourist Motels (2) Neelum (Keran)	-	14 Rooms Rs. 2500/Room	4 Rooms Rs. 3500/Room	Valley Lodges 03435800000	Leased out
4	Tourist Huts (6) Upper Neelum	-	12 Rooms Rs. 1600/Room	-	05822921317	
5	Tourist Lodge, Sharda	-	4 Rooms Rs. 2500/Room	1 Room Rs. 3500/Room	Valley Lodges 03435800000	Leased out
6	Tourist Lodge, Dawarrian	-	2 Rooms Rs. 2500/Room	-	Valley Lodges 03435800000	Leased out
7	Youth Hostel #1, Sharda	-	2 Rooms Rs. 2500/Room	-	Valley Lodges 03435800000	Leased out
8	Youth Hostel # 2, Sharda	-	3 Rooms Rs. 2500/Room	-	Valley Lodges 03435800000	Leased out
9	Tourist Motel, Kel	-	7 Rooms Rs. 1600/Room.	1 Room Rs. 2500/Room	05822921317	
	Total Rooms	03 Rooms	51 Rooms	07 Rooms		

District Muzaffarabad

S. #	Name of Lodges	Single Bedroom/ Rent Rs.1600	Double Bedroom/ Rent Rs.1600	Deluxe Room/ Rent Rs.2100	Contact No's	Current Status
1	Tourist Lodge, Shaheed Gali	-	2 Rooms	1 Room	05822-921317	
2	Tourist Lodge, Danna	-	2 Rooms	1 Room	05822-921317	
3	Tourist Lodge, Saran	-	3 Rooms	1 Room	05822-921317	
4	Tourist Lodge, Barsala	-	2 Rooms	-	05822-921317	
	Total		09 Rooms	03 Rooms		

District Bagh

1	Tourist Lodge, Sudhan Gali	-	2 Rooms	1 Room	05823-920067	
2	Tourist Huts (3) Dheerkot	-	6 Rooms	-	05823-920067	
3	Tourist Lodge, Neela Butt	-	2 Rooms	1 Room	05823-920067	
4	Tourist Lodge, Lasdanna	-	2 Rooms	1 Room	05823-920067	
	Total		12 Rooms	03 Rooms		

District Poonch

S. #	Name of Lodges	Single Bedroom Rent Rs.1600	Double Bedroom/ Rent Rs.1600	Deluxe Room/ Rent Rs.2100	Contact No's	Current Status
1	Tourist Lodge, Paniola	-	2 Rooms		05824-920123	
2	Tourist Lodge, Koyian	-	2 Rooms	1 Room	05824-920123	
3	Tourist Lodge, Banjosa	-	3 Rooms	2 Room	05824-920123	
4	Tourist Lodge, Ghor Mar	-	2 Rooms	-	05824-920123	
5	Tourist Lodge, Tatta pani	-	7 Rooms	1 Room	05824-920123	

District Kotli

1	Tourist Lodge, Sarda	-	3 Rooms	1 Room.	05826-920421	
2	Tourist Lodge, Teenda	-	5 Rooms	1 Room	05826-920421	
3	Tourist Lodge, Fatehpur	-	4 Rooms	1 Room	05826-920421	

District Mirpur

1	Tourist Hut, Mirpur	-	2 Rooms		05827-926001	
---	---------------------	---	---------	--	--------------	--

District Bhimber

1	Tourist Lodge, Jandi Chontra	-	2 Rooms		05827-926001	
---	------------------------------	---	---------	--	--------------	--

Source:-AJK Tourism Department, Muzaffarabad

Transport 2012

Sr.#	District	No. of registered vehicles during July, 2011 to June 2012	Total No. of registered vehicles Up to June 2012
1.	Muzaffarabad/ Hattian	1195	10693
2.	Neelum	40	56
3.	Bagh/ Haveli	77	696
4.	Poonch	161	1127
5.	Sudhnoti	52	446
6.	Mirpur	5573	49079
7.	Kotli	1912	11630
8.	Bhimber	574	3683
	Total	9584	77410

Source:-Commissioner Income Tax office, Mirpur.

Transport 2012

Motor Vehicles Registered by Type (July 2011 to June 2012)

Category	District								
	Mzd	Neelum	Kotli	Mir	Bhim.	Sud.	Poonch	Bagh	Total
Buses	2	-	15	154	04	-	-	-	175
Trucks	10	-	27	100	22	-	5	2	166
Motorcars	60	-	35	1228	27	-	6	2	1358
Taxi/Cab	-	-	-	-	-	-	-	-	0
Motor Cycles/ Scooters	1056	37	1576	3263	496	51	127	56	6662
Rickshaws	1	-	-	406	-	-	-	-	407
Jeeps	5	3	-	62	1	-	8	10	89
Station wagon	-	-	79	-	-	-	1	1	81
Tractors	1	-	-	27	15	-	6	2	51
Delivery van	-	-	25	114	6	1	4	1	151
Government goods vehicles	2	-	24	-	-	-	-	-	26
Oil tankers water tankers	-	-	-	-	-	-	-	1	1
Pickups	54	-	-	211	3	-	4	2	274
Gas tankers	-	-	131	-	-	-	-	-	131
Ambulances	4	-	-	-	-	-	-	-	4
Cranes	-	-	-	-	-	-	-	-	0
Truck trailers	-	-	-	8	-	-	-	-	8
Dumper trucks	-	-	-	-	-	-	-	-	0
Total	1195	40	1912	5573	574	52	161	77	9584

Source:-Commissioner Income Tax office, Mirpur.

Development Outlays

(1955-2013)

Allocation and Utilization

Million Rs.

S.No	Year	ADP Allocation	Utilization	%age utilization
1.	1 st Five Year Plan (1955-60)	10.000	10.000	100
2.	2 nd Five Year Plan (1960-65)	39.420	39.400	100
3.	3 rd Five Year Plan (1965-70)	88.100	88.000	99
4.	No Plan Period (1970-78)	604.100	576.000	95
5.	5 th Five Year Plan (1978-83)	1216.800	1215.500	99
6.	6 th Five Year Plan (1983-88)	3174.000	3102.300	98
7.	7 th Five Year Plan (1988-93)	4916.000	4709.900	98
8.	8 th Five Year Plan (1993-98)	8277.300	7768.900	94
9.	Non Plan Period (1998-2005)	20568.409	19239.389	93.5
10.	*MTDF 2005-10	35985.000	32599.315	90.6
	MTDF 2010-15			
11.	2010-11	6282.788	5923.365	94.3
12.	2011-12	8284.00	8229.000	99.3
13.	2012-13	9547.036	8074.955	84.6
14.	2013-14	11432.056	--	--

****MTDF: Medium Term Development Framework.**

Source: *Planning & Development Department –Muzaffarabad.

Azad Jammu & Kashmir

Sector Wise Revised Allocation & Utilization of ADP 2012-13

Rs. In million

S.#	Sector	Revised Allocation 2012-13	Amount Released	Utilization against released amount 2012-13	%age Utilization on Releases
1	Agriculture	216.190	187.490	180.787	96
2	Civil Defence	31.944	27.732	27.909	101
3	Development Authorities	130.680	86.450	86.450	100
4	Education	720.582	605.945	603.266	100
5	Environment	17.830	17.830	17.986	101
6	Foreign Aided Projects	105.424	82.166	83.303	101
7	Forestry/ Fisheries	306.856	266.399	265.220	100
8	Health	896.150	737.263	744.159	101
9	Information & Media Dev.	15.000	15.000	15.011	100
10	Information Technology	111.320	73.971	74.616	101
11	Industries & Minerals	113.179	100.355	100.030	100
12	Local Govt. & Rural Dev.	779.964	681.694	674.972	99
13	Power	1170.340	955.417	953.495	100
14	PP&H	757.616	538.793	515.720	96
15	Research & Dev.	92.302	92.302	92.569	100
16	Social Welfare	3.838	3.838	4.368	114
17	Sports	135.520	114.653	114.655	100
18	Transport & Communication	3873.593	3460.482	3453.840	100
19	Tourism	68.708	67.200	66.599	99
Total		9547.036	8114.980	8074.955	99.5

Source:-Accountant General Office, Muzaffarabad.

Azad Jammu & Kashmir
Non-Development Expenditure for the Year 2012-13

S.#	Department	Actual 2012-13	Budget Estimates 2013-14
1	General Administration	1633.916	1791.127
2	Board of Revenue	575.850	591.420
3	Stamps	13.451	13.596
4	Land Revenue & Settlement	17.730	18.310
5	Relief & Rehabilitation	690.860	691.510
6	Pension	3800.00	4000.000
7	Public Relation	83.910	77.120
8	Administration of Justice	790.000	810.626
9	Home (Police)	3297.000	3387.000
10	Jails	100.710	102.970
11	Civil Defense	70.126	74.955
12	Armed Service Board	42.109	45.718
13	Communication & Works	1875.490	1995.740
14	Education	15177.000	15819.000
15	Health	3284.099	3569.800
16	Sports Youth & Culture & Transport	45.450	50.990
17	Religious Affairs	105.040	113.000
18	Social Affairs & Woman Affairs	158.160	176.700
19	Agriculture	445.000	466.000
20	Animal Husbandry	434.135	458.776
21	Food	142.880	146.860
22	State Trading	850.000	2500.000
23	Forests	593.000	617.830
24	Cooperative	42.750	45.580
25	Electricity	5171.000	5417.000
26	Local Govt. & Rural Dev.	330.580	343.550
27	Industry, Labor & Mineral Resources	81.860	91.260
28	Printing Press	41.727	37.447
29	Sericulture	54.850	57.620
30	Tourism / Wildlife / Fisheries	95.670	101.170
31	Miscellaneous (Grants)	1360.647	1572.325
	Total	41405.000	45185.000

Source:-Finance Department, Muzaffarabad.

Budget 2012-13
Total General Revenue Receipts in AJ&K
2012-13 & 2013-14

(Rs. In million)

S #	Department	Actual 2012-13	Budget Estimates 2013-14
1	Provincial Excise	3700.000	4516.000
2	Land Revenue & Settlement	60.000	69.000
3	Stamps	115.000	132.250
4	Forests	350.000	402.500
5	Registration	50.000	57.5000
6	Administration of Justice	35.000	40.250
7	Jails	0.300	0.345
8	Home (Police)	40.000	50.000
9	Education	100.000	110.000
10	Health	50.000	39.466
11	Agriculture	3.620	4.162
12	Animal Husbandry	11.345	13.047
13	Co-operative	0.040	0.000
14	Industries, Labour & Minerals	24.050	27.658
15	Sericulture	1.600	1.840
16	Miscellaneous	350.000	600.000
17	Communication & Works	175.720	202.078
18	Electricity	7000.000	10050.000
19	Printing Press	10.000	11.5000
20	Armed Service Board	22.400	25.200
21	Religious Affairs	25.925	29.814
22	Food	700.000	805.000
23	Tourism / Wildlife / Fisheries	30.000	34.5000
24	Adjustment overdraft	0.000	-3046.110
	Total (1-24)	12855.000	14176.000
25	Water Usage Charges Mangla	650.000	809.000
26	80% Income from Kashmir Council	6400.000	9200.000
27	Federal Tax Share	11400.000	13600.000
28	Revenue Deficit	10100.000	7400.000
	Total (25-28)	28550.000	31009.000
	G. Total	41405.000	45185.000

Source:-Finance Department, Muzaffarabad.

**2005
EARTHQUAKE DAMAGES**

Important Statistics

●	Affected area (Sq. Km)	7000
●	Population affected (Million)	1.8
●	Villages affected	977
●	Houses Damaged	3,14,474
●	Deaths	46,570
●	Injured	33,136
●	Estimated Losses in Private Sector:	Rs. 60.875 Billion
●	Estimated Damages in Public Sector:	Rs. 64.328 Billion

Total Damages: Rs. 125.203 Billion

A. Losses to Civil Society

S #	Sector	Damages (Rs. In Billion)
1	Private Housing	50.000
2	Economic Assets	10.875
	Total:	60.875

B. Deaths/Injured/Houses:

S.#	District	Deaths	Injured	Houses (Uninhabitable) Damaged/ Destroyed
1	Neelum	470	624	13,963
2	Muzaffarbad	35,803	23,138	146,798
3	Bagh	9167	7,466	95,516
4	Rawalakot	1,120	1,883	55,307
5	Sudhnoti	04	25	2,890
6	Mirpur	06	0	0
Total		46,570	33,136	314,474

Source: SERRA Office, Muzaffarabad.

PUBLIC SECTOR DAMAGES

			Rs. In Billion
S#	Sector	Damages	Est. Cost
1.	Transport & Communication	Roads: 810 km Bridges: 2725 meter	6.140
2.	PP&H	Official accommodation: 806 Nos. (2050385 Sft)	5.153
3.	LG&RDD	Rural access roads: 1809 km, jeep able bridges: 18, foot bridges: 56 and rural water supply & solid waste: 1630	4.988
4.	Education	Education institutions: 2792 including 1876 primary schools, 569 middle, 301 high/ higher secondary schools, 21 inter, 14 degree colleges, 8 post graduate colleges & 2 university campuses	28.239
5.	Health	Health institutions: 159 including, 47 civil dispensaries, 96 BHUs, 15 RHCs, 4 THQs, 2 CMHs, 2 DHQs, Jinnah Dental Hospital, 01 Chest Disease Hospital & Abbas Institute of Medical Sciences (AIMS) MZD	5.926
6.	Electricity	Repair of hydel stations & rehabilitation of electrical damaged infrastructure.	0.839
7.	HEB		0.105
8.	Environment	Natural Resource Management, Socio Economic Dev.	1.394
9.	Livelihood	Infra. Reconst. Capacity building, Impl. Of Village Plans	1.577
10.	Others	(Industries, Tourism, Agriculture)	9.967
Total			64.328

Source: SERRA Office, Muzaffarabad.

Education Sector

Institutions	Pre-Earthquake	Damaged/ Destroyed
Primary Schools	4228	1875
Middle Schools	1032	571
High Schools	606	271
H.S. Schools/ Colleges	138	68
University	01	01
College of Education	02	01
Model Science College	03	01
Literacy School	03	03
Vocational Centre	01	01
Total	6020	2792

Transport and Communication

Type	Total Length (KM)	Damage (KM)
Metalled Roads	4852	810

Type	Span of Damaged bridge
Bridges	2725 meters

Health Sector Damages

Facilities	Pre-Earthquake	Damaged/Destroyed
Dispensaries	100	47
BHUs	194	122
RHCs	32	19
THQ Hospitals	08	04
DHQ Hospitals	05	02
CMHs	02	02
AIMS/Hospitals	03	03
Offices	06	06
Total	350	176

Governance Sector

Category	Damage Buildings	Covered Area (in Sft.)
Physical Planning & Housing Sector Buildings	806	1,479,430

Source: SERRA Office, Muzaffarabad.

Water Supply Sector

Damages	Total (Nos)	Damaged/ Destroyed	% age of damaged schemes
i) Urban Water Supply	23	10	43%
ii) Rural water Supply	6500	1603	25%
Total	6523	1613	25%

State Forests Damages

S.No	District	Forest Area (Ac)	Badly affected Forest Area (Ac)
1	Neelum	6,77,258	86,413
2	Muzaffarabad	2,18,168	1,65,808
3	Bagh	1,56,075	78,038
4	Poonch	65,240	32,000
5	Sudhnuti	55,520	10,000
Total		11,72,441	3,72,250

Power Sector

Facility	Pre-Earthquake	Damaged/Destroyed
Electric Connections	390747	77284
Hydel Stations	06	05
HT lines (KM)	7677	1408
LT lines (KM)	12565	3273
Grid Stations	19	05
Transformers	7250	928

Source: SERRA Office, Muzaffarabad.

Damages of Agriculture Sector

Particulars	Unit	Qty	Damages	
			Unit Cost	Amount (Rs. In Million)
1. Land Terraces	Hectares	3013	0.03	90.400
2. Protection bunds	Cubic Meters	20000	Nil	Nil
3. Storage lost	Acres	150000	0.013	1963.600
4. Agri.Inputs	Acres	150000	Nil	Nil
5. Damages to fruit orchards	No	15033	0.005	225.200
5.1 Fruit Plant Nurseries	Hectares	12	Nil	Nil
5.2 Planting Fruit Trees	No	90000	Nil	Nil

Crop Sector Damages

Category	Estimated value of losses (Rs. in Million)
Field Terraces	201.000
Fruit Plant Damages	225.000
Research and Extension building damages	458.000
Storage lost at farm level	1964.00
Crop productivity losses	744.000
Irrigation infrastructure damages	240.000
Other damages	3832.00
Total	7664.00

Animal Husbandry Deptt. (Public Sector)

S.#	Particulars	Damages Estimate			
		Unit	Qty.	Unit Cost	Amount (Rs. In Million)
1	Civil Works (Offices, Residences, Labs, Poultry Sheds, Hatcheries).	Sft	229845	1000	229.845
2	Office/ Lab Equipment	L/S	-	-	4.180
Total		-	-	-	273.025

Source: SERRA Office, Muzaffarabad.

Animal :Husbandry Deptt. (Private Sector)

S.#	Particulars	Damages Estimate			
		Unit	Qty.	Unit Cost (avg.)	Amount (Rs. In Million)
1	Animal deaths/ replacement				
	(i) Cattle	No	81,939	28780	2358.234
	(ii) Buffalo	No	55,239	37294	2060.109
	(iii) Goat/ Sheep	No	88,427	40000	353.700
2	Animal Productivity (Survived Cattle and Buffalo)	No	3,83,332	-	3600.100
3	Animal Sheds (Gawals)	House Hold	1.30,908	24000	3141.800
4	Poultry Birds	No	2,67,105	-	48.100
	Total				11,562.043

Tourism Sector Damages

District	No of Rest Houses	Damaged	Damaged (Cover area in Sq. m)
Muzaffarabad	08	08	21,802
Neelum	08	04	15,913
Bagh	04	04	13,814
Poonch	06	04	10,247
Kotli	04	02	4,100
Total	30	22	46256

IT Sector

Facility	Pre-Earthquake	Damaged/Destroyed
Computer lab in Colleges	36	17
Computer lab in High Schools	47	24
IT Training Centers	07	03
Govt. Employees Training Institutes	02	01
Total	92	45

Source: SERRA Office, Muzaffarabad.

Rescue & Relief Operations

World's biggest rescue and relief operations started within hours of the occurrence of the earthquake

- 50 helicopters deployed
- Generated 19,000 sorties

■ People initially migrated to Camps(Total No.):	116,512
■ Camps established (Total No.):	125

Relief items distributed:

- | | |
|---|---------------|
| i. Medicines | 855.2 tons |
| ii. Rations | 75,962 tons |
| iii. Blankets | 1.91 million |
| iv. G.I sheets | 6.000 million |
| v. Tents | 0.400 million |
| vi. The relief goods provided by the NGOs/ Civil Society are uncountable. | |

- All primary and secondary roads were opened, communication and power restored.
- Averted additional deaths from exposure to severe climatic condition, hunger and disease

Source: SERRA Office, Muzaffarabad.

Progress of Reconstruction & Rehabilitation Program in AJK

RECONSTRUCTION & REHABILITATION PROGRAMME.

Due to the earthquake of 8th Oct 2005 about 7000 Sq Km area was affected. It severely affected 1.8 million people while 46570 people died. It also seriously injured 33136 and displaced 0.116 million people. Infrastructure and communication system was collapsed and agricultural lands were severely damaged. The main objective of the Reconstruction Programme is to move towards permanent and sustainable reconstruction and rehabilitation of the affected area with the aim to “Build Back Better” in terms of physical infrastructure, size and scope of activities; and the quality of services to the people of affected areas.

Reconstruction & Rehabilitation Programme is mandated to undertake the gigantic task in the earthquake affected areas in the major socio-economic sectors i.e.

- **HOUSING:** Includes the Rural and Urban housing as well as town planning.
- **LIVELIHOODS:** Includes livelihoods cash grants for vulnerable households;
- **EDUCATION:** All education facilities have been made functional through provision of interim structures like pre-fabricated buildings and large weather proof tents. Moreover, comprehensive permanent reconstruction strategy has been finalized and approved by the competent forum.
- **HEALTH:** All health facilities have been made functional through provision of interim pre-fabricated structures and a comprehensive health strategy has been finalized for permanent Reconstruction Programme.
- **WATER & SANITATION:** Water and sanitation (WATSAN) strategy covering water supply, sanitation, solid waste management and reconstruction of relevant departments building has been finalized and approved by the competent forum.
- **GOVERNANCE:** The administrative structure in the districts of Muzaffarabad, Neelum, Bagh, Poonch and Sudhnoti were disrupted by the destruction of administrative complexes. The majority of buildings, both offices and residences were destroyed or damaged, including the civil secretariat and the Supreme Court. Governance sector strategy aimed at reconstruction and rehabilitation of all damaged buildings of Government departments, has been finalized and approved by ERRA Council.
- **POWER:** The Power sector was severely damaged by the earthquake. However most of the damaged structures were repaired on urgent basis. Distribution and retail services delivery infrastructure were the most damaged by the earthquake. Power sector strategy has been approved for reconstruction of damaged infrastructure.
- **ROADS/TRANSPORTS:** The earthquake caused severe damage to the transport system in the affected areas of AJ&K. It is estimated that 2551 Km of roads were partially or fully damaged in AJ&K. The poor state of roads is one of the largest challenges facing Reconstruction Programme. Transport sector strategy for reconstruction & rehabilitation has been finalized and approved by the competent forum.

- **TELECOMMUNICATION:** In the telecommunication sector, the key organizations in the earthquake affected areas are mainly PTCL and SCO. Telecommunication sector has been finalized and approved by the ERRA Council.
- **SOCIAL PROTECTION:** Although the entire population affected by the earthquake is vulnerable, the social protection program focused specifically on the groups which are at the greatest risk. Social protection strategy for reconstruction & rehabilitation has been finalized.
- **ENVIRONMENT:** The most visible affect of the earthquake had on the environment, is the land-shearing, liquefaction, and slides that occurred as a consequence of the earthquake. The earthquake destroyed water channels; resulted in the siltation of some rivers and streams; deteriorated forest resources; caused massive destruction to farm lands, especially terraced land situated on steep terrain; and destroyed many fish farms. The disposal of massive amounts of debris from fallen structures is a significant environmental challenge.
- **TOURISM SECTOR:** The vast majority of hotels and other tourist infrastructure were destroyed by the earthquake. A policy approach for the reconstruction and rehabilitation of the tourism sector is yet to be formulated.
- **Urban Development:** Master Plan for 3 cities (Muzaffarabad, Bagh & Rawalakot) prepared. City Development Projects for these three cities costing Rs. 21.136 billion, 7349.76 million and 8202.60 million respectively are approved. Moreover, natural gas has also been announced to be provided to these three cities as a part of Reconstruction Program.

Overall Disbursement of Housing Cash Grant for Rural and Urban Houses:

Total compensation paid till date: Rs. 49.584 billion (99.5%)

<u>1st Tranche:</u> @ Rs.25000	Rs. 7.862 billion paid to 314474 (100%) beneficiaries (287896 Rural + 26578 Urban)
<u>2nd Tranche:</u> @ Rs. 75000 (T.D) @ Rs. 50000 (P.D)	Rs. 22.624 billion paid to 307652 (100%, T.D: 273296, P.D: 34356) beneficiaries Rs. 2.096 billion paid to 25445 (Urban) Rs. 20.528 billion paid to 282210 (Rural)
<u>3rd Tranche (Rural):</u> @ Rs. 25000	Rs. 6.193 billion paid to 264188 (97%) beneficiaries against 273296 beneficiaries
<u>4th Tranche:</u> @ Rs.50000	Rs. 12.905 billion paid to 258118 (98%) beneficiaries against 264188 beneficiaries

Source: SERRA Office, Muzaffarabad.

Payment for Injured/Deaths/Multiple Deaths

S#	District	Injured (33,136)	Amount	Deaths (46,570)	Amount	Total Amount Paid
1	Muzaffarbad	21,906	453.805	34,284	3428.400	3882.205
2	Bagh	7,440	159.525	9,366	936.600	1096.125
3	Rawalakot	1,884	38.695	1,117	111.700	150.395
4	Sudhnoti	25	0.545	4	0.400	0.945
5	Neelum	552	12.205	446	44.600	56.805
6	Mirpur	--	--	6	0.600	0.600
Total		31807	664.775	45,223	4522.300	5187.075

Disbursement of Livelihood Support Cash Grant (Completed)

S. No	District	Beneficiaries	Amount Paid (Rs. in Million)
1	Muzaffarabad	54040	1070.469
2	Bagh	38884	781.488
3	Poonch	30930	622.926
4	Sudhnoti	3183	65.502
5	Neelum	5247	106.326
Total:		132,284	2646.711

Source: SERRA Office, Muzaffarabad.

Sector wise Status of Overall Reconstruction Projects

S#	Sectors	Projects/ Facilities		Completed	Work in progress	Work yet to be started
1	Education	GoP	1824	286	854	684
		Sponsor	423	359	49	15
		EEAP	309	309	-	-
		EAFP	201	201	-	-
		SFD&KF	35	17	18	0
		Total	2792	1172	921	699
2	Health	159		102	34	23
3	WATSAN	2782		2594	160	28
4	Transport (Roads & Bridges)	83		74	8	1
5	Power	58		58	-	-
6	Environment	128		58	69	1
7	Governance (Buildings)	233		106	100	27
8	Medical Rehabilitation	2		2	-	-
9	Social Protection	6		2	4	-
10	Livelihood (Buildings)	469		97	223	149
11	Livelihood (CLRPs)	974		725	247	2
12	Telecommunication	44		44	-	-
13	AJK Urban Development	235		10	47	178
Total		7965		5044	1813	1108

Source: SERRA Office, Muzaffarabad.

Overall Progress of Reconstruction Program in AJK 2012-13

(Rs. in billion)

S. No.	Source	Portfolio	Utilization	Balance	
A-1.	1	Earthquake Emergency Assistance Project (EEAP) (ADB Funded) i.e. Reconstruction of 309 schools, 31 Health facilities including equipment(26 BHUs, 1 RHC, 2THQ Hospitals , 1 DHQ and Residential Units CMH Rwkt. And DHO/ADHO), 4 Major Roads, 11 link roads (Length 226 Km), 8 RCC Bridges , sub-structure of 41 steel bridges and rehabilitation damaged power infrastructure including 58 buildings., installation of 996 Transformers, 80444 Energy Meters, 5631 Poles, 1500 km conductors & other electrical fixtures completed.	17.285	17.284	0.001
	2	SFD&KF (Saudi & Kuwait Fund) (2 University Campuses Mzd. & RKT , 33 colleges, 2 DHQ complexes)	13.497	6.957	6.54
	3	EAFP Part-Z/ (World Bank Funded) (201 primary schools, 4 Secretariat Buildings, 3 Police Stations, 55 local council buildings and 56 KM rural link roads)	2.597	2.597	0
	4	Chinese Preferential Buyer's Credit (232 sub-projects of Mzd, Bagh & RKT City)	30.000	8.200	21.8
Sub-Total(A-1)		63.379	35.038	28.341	
A-2.	5	West Bank Bypass Road and Naluchi Bridge (Length of Road 5km Bridge 246 m)	2.563	1.713	0.85
	6	Housing Cash Grant (314474 beneficiaries)	50.100	49.659	0.441
	7	Payments of Injured (31807)/ Deaths (45223)/ Livelihoods Cash Grant (132284) and Landless (9873) Total (219187 beneficiaries)	8.574	8.574	0
Sub-Total(A-2)		61.237	59.946	1.291	
Donors Sub-Total(A-1,A2)		124.616	94.984	29.632	
B-1.	8	GOP Funded Projects/Facilities (Total 5337, completed 2402, work in progress 1994 and work yet to be started 941)	56.288	18.013	38.275
B-2.	9	44 Telecom Buildings under telecom project	0.63	0.630	0
	10	Rehabilitation of HEB Project	0.102	0.102	0
	11	Reconstruction of 13 Post Office Buildings	0.043	0.043	0
	12	Medical rehabilitation 02 Centre	0.0248	0.0248	0
Sub-Total(B2)		0.7998	0.7998	0	
B-3.	13	Land Acquisition (10479 Kanal) (President Relief Fund)	4.187	2.102	2.085
GOP Sub-Total(B-1, B-2, B-3)		61.2748	20.9148	40.360	
C.	14*	Sponsored Projects (Total 1675, completed 1595 and work in progress 55 and yet to be started)	21.607	17.660	3.974
Total C		21.607	17.660	3.974	
G. Total **		207.498	133.559	73.939	

*Tentative Cost

**Excluding (i) Rescue & Relief Operation (ii) Soft component implemented by Sponsors, NGO's & INGO's.

Source: SERRA Office, Muzaffarabad (dated 30-08-2013).